

NSMF Polyclonal Antibody

Catalog No: #30590

Package Size: #30590-1 50ul #30590-2 100ul

Orders: order@signalwayantibody.comSupport: tech@signalwayantibody.com

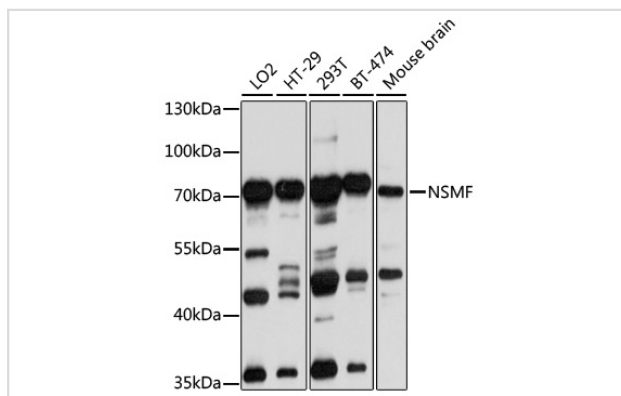
Description

Product Name	NSMF Polyclonal Antibody
Host Species	Rabbit
Clonality	Polyclonal
Isotype	IgG
Purification	Affinity purification
Applications	WB
Species Reactivity	Human,Mouse
Immunogen Description	Recombinant fusion protein of human NSMF (NP_001124443.1).
Other Names	NSMF; HH9; NELF; NMDA receptor synaptonuclear signaling and neuronal migration factor
Accession No.	Swiss-Prot#:Q6X4W1NCBI Gene ID:26012
Calculated MW	70kDa
Formulation	Avoid freeze / thaw cycles. Buffer: PBS with 50% glycerol, pH7.4.
Storage	Store at -20°C

Application Details

WB □ 1:500 - 1:2000

Images



Western blot analysis of extracts of various cell lines, using NSMF antibody at 1:1000 dilution.

Background

The protein encoded by this gene is involved in guidance of olfactory axon projections and migration of luteinizing hormone-releasing hormone neurons. Defects in this gene are a cause of idiopathic hypogonadotropic hypogonadism (IHH). Several transcript variants encoding different isoforms have been found for this gene.

Note: This product is for in vitro research use only and is not intended for use in humans or animals.