

# Tri-Methyl-Histone H3 (K10) Polyclonal Antibody

Catalog No: #HW171



Package Size: #HW171-1 50ul #HW171-2 100ul

Orders: [order@signalwayantibody.com](mailto:order@signalwayantibody.com)

Support: [tech@signalwayantibody.com](mailto:tech@signalwayantibody.com)

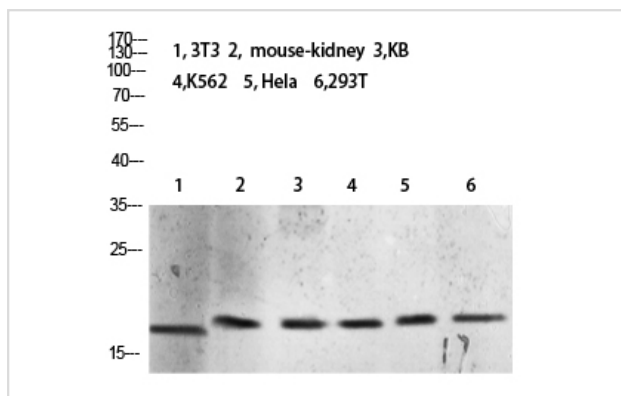
## Description

Product Name	Tri-Methyl-Histone H3 (K10) Polyclonal Antibody
Host Species	Rabbit
Clonality	Polyclonal
Purification	The antibody was affinity-purified from rabbit serum by affinity-chromatography using specific immunogen.
Applications	WB
Species Reactivity	Hu Ms Rt
Specificity	The antibody detects endogenous Tri-Methyl-Histone H3 (K10)
Immunogen Description	Synthetic Tri-Methyl peptide from human protein at AA range: 10
Target Name	Tri-Methyl-Histone H3 (K10)
Accession No.	Swiss-Prot:P68431/Q71DI3/P84243/Q6NXT2NCBI Gene ID:8350
Calculated MW	15 kDa
Concentration	1 mg/ml
Formulation	Liquid in PBS containing 50% glycerol, 0.5% BSA and 0.02% sodium azide.
Storage	Store at -20°C

## Application Details

Western blotting: 1µg;500-1µg;2000

## Images



Western blot analysis of 293T lysate, antibody was diluted at 2000. Secondary antibody: diluted at 1:20000

Note: This product is for in vitro research use only and is not intended for use in humans or animals.