

## TDP1 Polyclonal Antibody

Catalog No: #30617

Package Size: #30617-1 50ul #30617-2 100ul

Orders: [order@signalwayantibody.com](mailto:order@signalwayantibody.com)Support: [tech@signalwayantibody.com](mailto:tech@signalwayantibody.com)

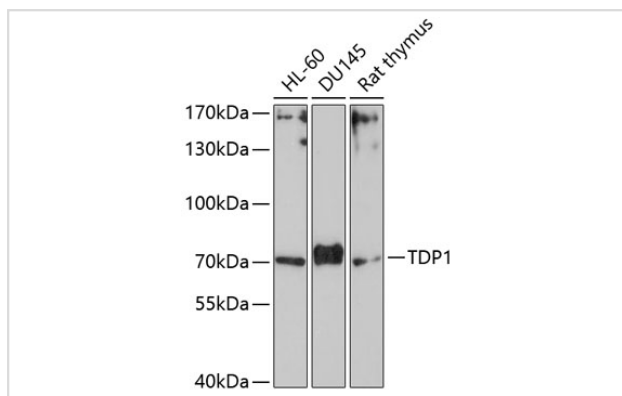
## Description

Product Name	TDP1 Polyclonal Antibody
Host Species	Rabbit
Clonality	Polyclonal
Isotype	IgG
Purification	Affinity purification
Applications	WB,IF
Species Reactivity	Human,Rat
Immunogen Description	Recombinant fusion protein of human TDP1 (NP_060789.2).
Other Names	TDP1
Accession No.	Uniprot:Q9NUW8GeneID:55775
Calculated MW	70kDa
SDS-PAGE MW	70kDa
Formulation	PBS with 0.02% sodium azide,50% glycerol,pH7.3.
Storage	Store at -20°C. Avoid freeze / thaw cycles.

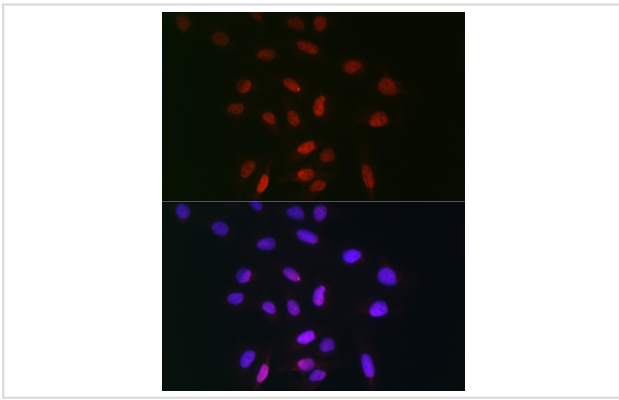
## Application Details

WB □ 1:500 - 1:2000 IF □ 1:50 - 1:200

## Images



Western blot analysis of extracts of various cell lines, using TDP1 Antibody.



Immunofluorescence analysis of U-2 OS cells using TDP1 Rabbit pAb.

## Background

The protein encoded by this gene is involved in repairing stalled topoisomerase I-DNA complexes by catalyzing the hydrolysis of the phosphodiester bond between the tyrosine residue of topoisomerase I and the 3-prime phosphate of DNA. This protein may also remove glycolate from single-stranded DNA containing 3-prime phosphoglycolate, suggesting a role in repair of free-radical mediated DNA double-strand breaks. This gene is a member of the phospholipase D family and contains two PLD phosphodiesterase domains. Mutations in this gene are associated with the disease spinocerebellar ataxia with axonal neuropathy (SCAN1).

Note: This product is for in vitro research use only and is not intended for use in humans or animals.