

NEDD1 Polyclonal Antibody

Catalog No: #30637

Package Size: #30637-1 50ul #30637-2 100ul

Orders: order@signalwayantibody.com

Support: tech@signalwayantibody.com

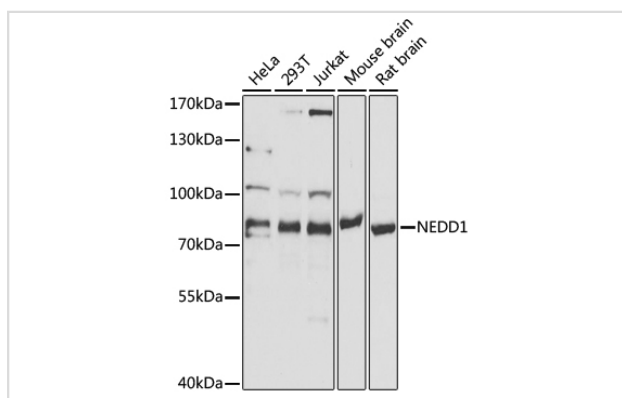
Description

Product Name	NEDD1 Polyclonal Antibody
Host Species	Rabbit
Clonality	Polyclonal
Isotype	IgG
Purification	Affinity purification
Applications	WB,IF
Species Reactivity	Human,Mouse,Rat
Immunogen Description	Recombinant fusion protein of human NEDD1 (NP_690869.1).
Other Names	NEDD1; GCP-WD; TUBGCP7; protein NEDD1
Accession No.	Swiss-Prot#:Q8NHV4NCBI Gene ID:121441
Calculated MW	78kDa
Formulation	Avoid freeze / thaw cycles. Buffer: PBS with 50% glycerol, pH7.4.
Storage	Store at -20°C

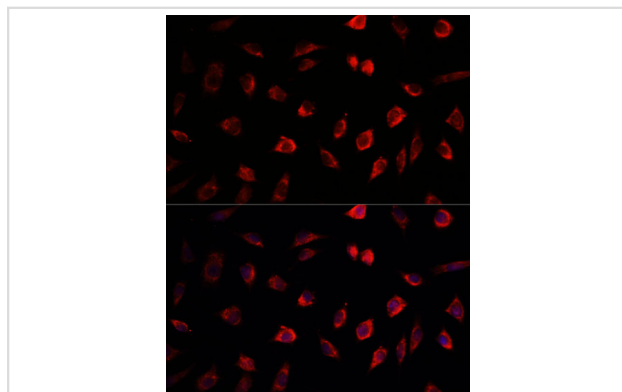
Application Details

WB □ 1:500 - 1:2000 IF □ 1:50 - 1:200

Images



Western blot analysis of extracts of various cell lines, using NEDD1 antibody at 1:1000 dilution.



Immunofluorescence analysis of L929 cells using NEDD1 antibody at dilution of 1:100. Blue: DAPI for nuclear staining.

Note: This product is for in vitro research use only and is not intended for use in humans or animals.