

ETF1 Polyclonal Antibody

Catalog No: #30673



Package Size: #30673-1 50ul #30673-2 100ul

Orders: order@signalwayantibody.com

Support: tech@signalwayantibody.com

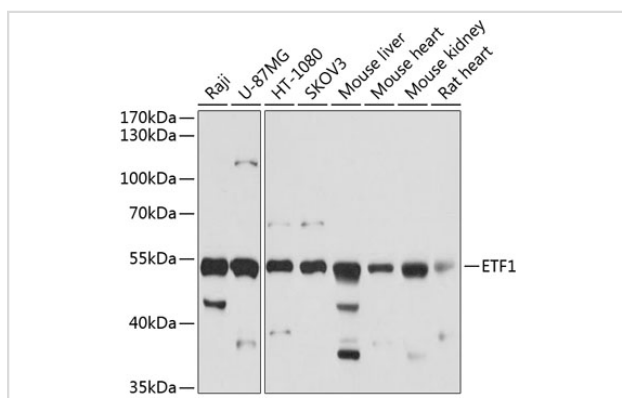
Description

Product Name	ETF1 Polyclonal Antibody
Host Species	Rabbit
Clonality	Polyclonal
Isotype	IgG
Purification	Affinity purification
Applications	WB,IF
Species Reactivity	Hu,Ms,Rt
Immunogen Description	Recombinant fusion protein of human ETF1 (NP_004721.1).
Other Names	ETF1; D5S1995; ERF; ERF1; RF1; SUP45L1; TB3-1; eukaryotic translation termination factor 1
Accession No.	Swiss-Prot#:P62495NCBI Gene ID:2107
Calculated MW	55kDa
Formulation	Avoid freeze / thaw cycles. Buffer: PBS with 50% glycerol, pH7.4.
Storage	Store at -20°C

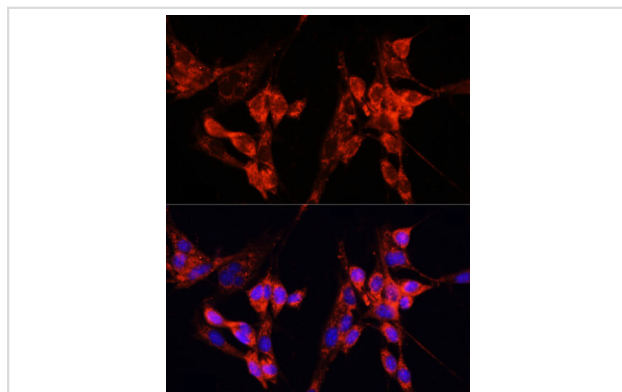
Application Details

WB 1:200 - 1:2000 IF 1:50 - 1:200

Images



Western blot analysis of extracts of various cell lines, using ETF1 antibody.



Immunofluorescence analysis of NIH-3T3 cells using ETF1 Polyclonal Antibody.

Background

This gene encodes a class-1 polypeptide chain release factor. The encoded protein plays an essential role in directing termination of mRNA translation from the termination codons UAA, UAG and UGA. This protein is a component of the SURF complex which promotes degradation of prematurely terminated mRNAs via the mechanism of nonsense-mediated mRNA decay (NMD). Alternate splicing results in multiple transcript variants. Pseudogenes of this gene are found on chromosomes 6, 7, and X.

Note: This product is for in vitro research use only and is not intended for use in humans or animals.