

# EIF2C2 Polyclonal Antibody

Catalog No: #30692



Package Size: #30692-1 50ul #30692-2 100ul

Orders: [order@signalwayantibody.com](mailto:order@signalwayantibody.com)

Support: [tech@signalwayantibody.com](mailto:tech@signalwayantibody.com)

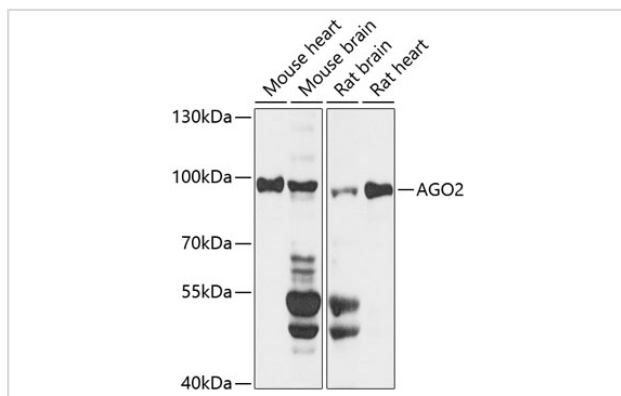
## Description

Product Name	EIF2C2 Polyclonal Antibody
Host Species	Rabbit
Clonality	Polyclonal
Isotype	IgG
Purification	Affinity purification
Applications	WB,IHC
Species Reactivity	Hu,Ms,Rt
Immunogen Description	A synthetic peptide of human EIF2C2 (NP_036286.2).
Other Names	AGO2; CASC7; EIF2C2; LINC00980; PPD; Q10; protein argonaute-2
Accession No.	Swiss-Prot#:Q9UKV8NCBI Gene ID:27161
Calculated MW	97kDa
Formulation	Avoid freeze / thaw cycles. Buffer: PBS with 50% glycerol, pH7.4.
Storage	Store at -20°C

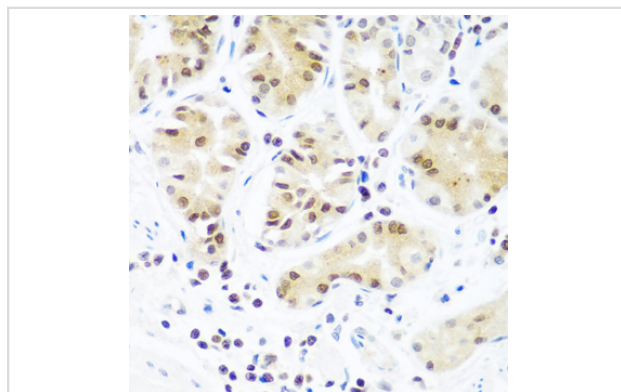
## Application Details

WB 1:500 - 1:1000 IHC 1:50 - 1:200

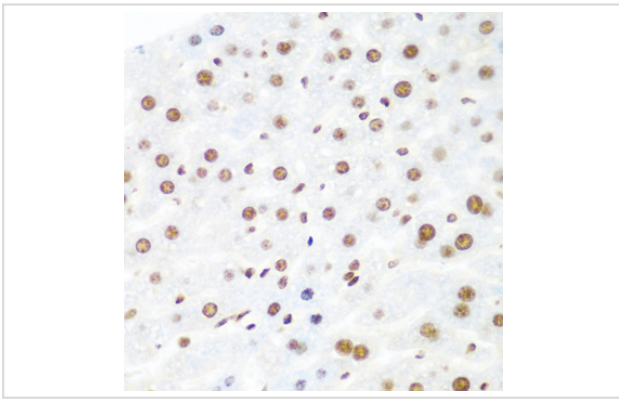
## Images



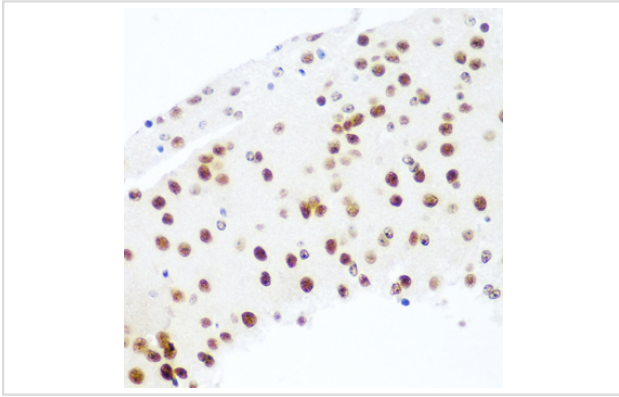
Western blot analysis of extracts of various cell lines, using AGO2 antibody.



Immunohistochemistry of paraffin-embedded human stomach using AGO2 antibody.



Immunohistochemistry of paraffin-embedded mouse liver using AGO2 antibody.



Immunohistochemistry of paraffin-embedded mouse brain using AGO2 antibody.

## Background

This gene encodes a member of the Argonaute family of proteins which play a role in RNA interference. The encoded protein is highly basic, and contains a PAZ domain and a PIWI domain. It may interact with dicer1 and play a role in short-interfering-RNA-mediated gene silencing. Multiple transcript variants encoding different isoforms have been found for this gene.

Note: This product is for in vitro research use only and is not intended for use in humans or animals.