

EIF4G Polyclonal Antibody

Catalog No: #30701

Package Size: #30701-1 50ul #30701-2 100ul

Orders: order@signalwayantibody.comSupport: tech@signalwayantibody.com

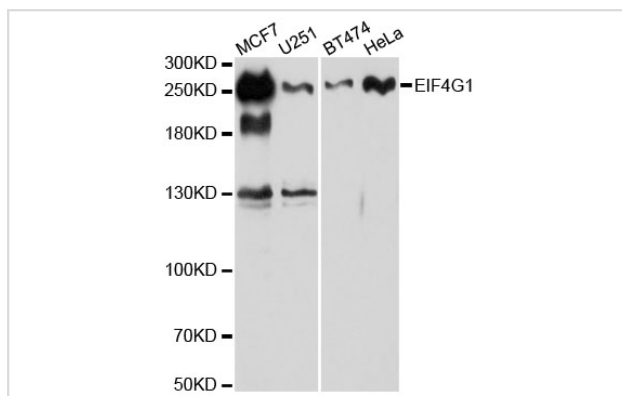
Description

Product Name	EIF4G Polyclonal Antibody
Host Species	Rabbit
Clonality	Polyclonal
Isotype	IgG
Purification	Affinity purification
Applications	WB,IHC
Species Reactivity	Human
Immunogen Description	A synthetic peptide of human EIF4G (NP_886553.3).
Other Names	EIF4G1;EIF-4G1;EIF4F;EIF4G;EIF4GI;P220;PARK18
Accession No.	Uniprot:Q04637GeneID:1981
Calculated MW	260kDa
SDS-PAGE MW	260kDa
Formulation	PBS with 0.02% sodium azide,50% glycerol,pH7.3.
Storage	Store at -20°C. Avoid freeze / thaw cycles.

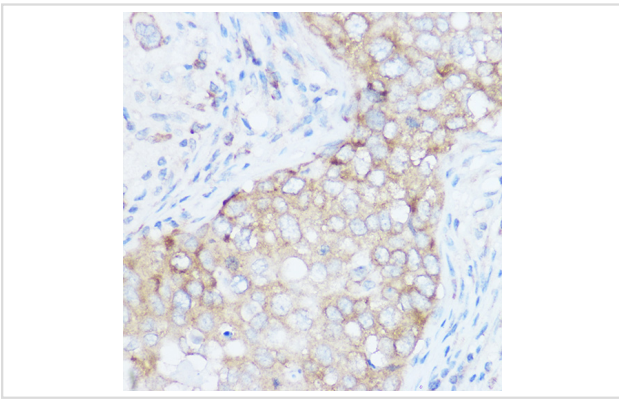
Application Details

WB □ 1:500 - 1:1000 IHC □ 1:50 - 1:200

Images



Western blot analysis of extracts of various cell lines, using EIF4G antibody.



Immunohistochemistry of paraffin-embedded human breast cancer using EIF4G Rabbit pAb.

Background

The protein encoded by this gene is a component of the multi-subunit protein complex EIF4F. This complex facilitates the recruitment of mRNA to the ribosome, which is a rate-limiting step during the initiation phase of protein synthesis. The recognition of the mRNA cap and the ATP-dependent unwinding of 5'-terminal secondary structure is catalyzed by factors in this complex. The subunit encoded by this gene is a large scaffolding protein that contains binding sites for other members of the EIF4F complex. A domain at its N-terminus can also interact with the poly(A)-binding protein, which may mediate the circularization of mRNA during translation. Alternative splicing results in multiple transcript variants, some of which are derived from alternative promoter usage.

Note: This product is for in vitro research use only and is not intended for use in humans or animals.