

## TUBG1 Polyclonal Antibody

Catalog No: #30709

Package Size: #30709-1 50ul #30709-2 100ul

Orders: order@signalwayantibody.com

Support: tech@signalwayantibody.com

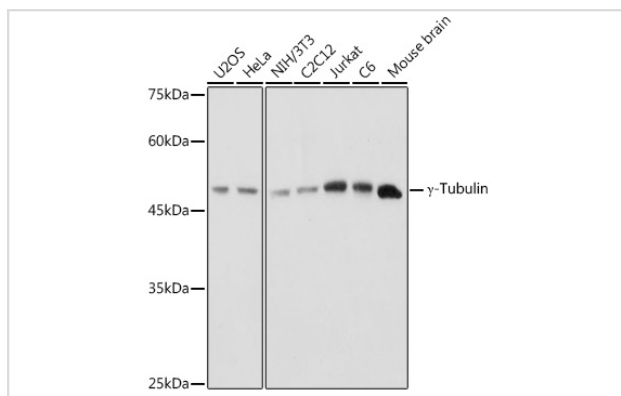
## Description

Product Name	TUBG1 Polyclonal Antibody
Host Species	Rabbit
Clonality	Polyclonal
Isotype	IgG
Purification	Affinity purification
Applications	WB
Species Reactivity	Human,Mouse,Rat
Immunogen Description	Recombinant fusion protein of human $\alpha\Omega\frac{1}{2}\alpha\Omega\frac{1}{2}$ -Tubulin (NP_001061.2).
Other Names	TUBG1;CDCBM4;GCP-1;TUBG;TUBGCP1
Accession No.	Uniprot:P23258GeneID:7283
Calculated MW	51kDa
SDS-PAGE MW	50KDa
Formulation	PBS with 0.02% sodium azide,50% glycerol,pH7.3.
Storage	Store at -20°C. Avoid freeze / thaw cycles.

## Application Details

WB □ 1:500 - 1:2000

## Images



Western blot analysis of extracts of various cell lines, using  $\alpha\Omega\frac{1}{2}\alpha\Omega\frac{1}{2}$ -Tubulin antibody.

## Background

This gene encodes a member of the tubulin superfamily. The encoded protein localizes to the centrosome where it binds to microtubules as part of a complex referred to as the gamma-tubulin ring complex. The protein mediates microtubule nucleation and is required for microtubule formation and progression of the cell cycle. A pseudogene of this gene is found on chromosome 7.

---

Note: This product is for in vitro research use only and is not intended for use in humans or animals.