

## AR(Acetyl-K631) Polyclonal Antibody

Catalog No: #HW183



Package Size: #HW183-1 50ul #HW183-2 100ul

Orders: order@signalwayantibody.com

Support: tech@signalwayantibody.com

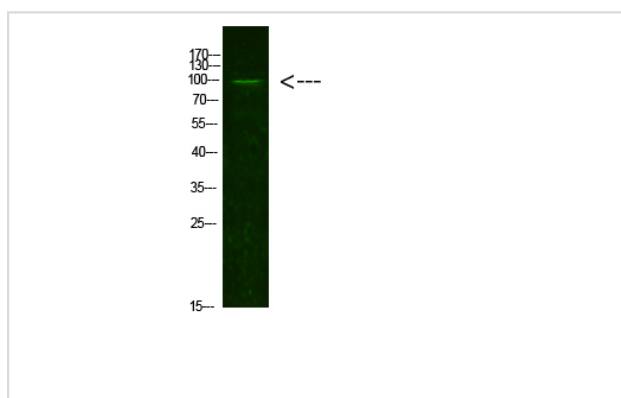
## Description

Product Name	AR(Acetyl-K631) Polyclonal Antibody
Host Species	Rabbit
Clonality	Polyclonal
Purification	The antibody was affinity-purified from rabbit antiserum by affinity-chromatography using epitope-specific immunogen.
Applications	WB
Species Reactivity	Hu Ms Rt
Specificity	This antibody detects endogenous levels of AR(Acetyl-K631), It doesn't react with total protein.
Immunogen Type	protein
Immunogen Description	Synthesized Acetyl peptide derived from human AR. at AA range: K631
Target Name	AR(Acetyl-K631)
Other Names	Androgen receptor (Dihydrotestosterone receptor) (Nuclear receptor subfamily 3 group C member 4)
Accession No.	Swiss-Prot:P10275NCBI Gene ID:367
Calculated MW	99 kDa
Concentration	1 mg/ml
Formulation	Liquid in PBS containing 50% glycerol, 0.5% BSA and 0.02% sodium azide.
Storage	Store at -20°C

## Application Details

Western blotting: 1B£B'1500-1B£B'12000

## Images



Western Blot analysis of mouse-brain cells using primary antibody diluted at 1:1000(°C overnight). Secondary antibody B£B'Goat Anti-rabbit IgG IRDye 800( diluted at 1:5000, 25B'£C, 1 hour)

Note: This product is for in vitro research use only and is not intended for use in humans or animals.