

E2F-1 (Acetyl-K117) Polyclonal Antibody

Catalog No: #HW184



Package Size: #HW184-1 50ul #HW184-2 100ul

Orders: order@signalwayantibody.com

Support: tech@signalwayantibody.com

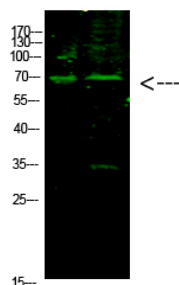
Description

Product Name	E2F-1 (Acetyl-K117) Polyclonal Antibody
Host Species	Rabbit
Clonality	Polyclonal
Purification	The antibody was affinity-purified from rabbit antiserum by affinity-chromatography using epitope-specific immunogen.
Applications	WB
Species Reactivity	Hu Ms Rt
Specificity	This antibody detects endogenous levels of E2F-1 (Acetyl-K117), It doesn't react with total protein.
Immunogen Type	protein
Immunogen Description	Synthesized Acetyl peptide derived from human E2F-1. at AA range: K117
Target Name	E2F-1 (Acetyl-K117)
Other Names	Transcription factor E2F1 (E2F-1) (PBR3) (Retinoblastoma-associated protein 1) (RBAP-1) (Retinoblastoma-binding protein 3) (RBBP-3) (pRB-binding protein E2F-1)
Accession No.	Swiss-Prot:Q01094NCBI Gene ID:1869
Calculated MW	70 kDa
Concentration	1 mg/ml
Formulation	Liquid in PBS containing 50% glycerol, 0.5% BSA and 0.02% sodium azide.
Storage	Store at -20°C

Application Details

Western blotting: 1B£B1500-1B£B12000

Images



Western Blot analysis of 1,hela 2,mouse-brain cells using primary antibody diluted at 1:1000(°C overnight). Secondary antibodyB£B1Goat Anti-rabbit IgG IRDye 800(diluted at 1:5000, 25B'Γ£C, 1 hour)

Note: This product is for in vitro research use only and is not intended for use in humans or animals.