

## E2F-1 (Acetyl-K125) Polyclonal Antibody

Catalog No: #HW185



Package Size: #HW185-1 50ul #HW185-2 100ul

Orders: order@signalwayantibody.com

Support: tech@signalwayantibody.com

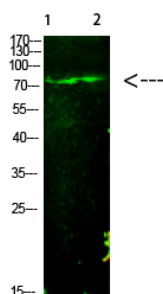
## Description

Product Name	E2F-1 (Acetyl-K125) Polyclonal Antibody
Host Species	Rabbit
Clonality	Polyclonal
Purification	The antibody was affinity-purified from rabbit antiserum by affinity-chromatography using epitope-specific immunogen.
Applications	WB
Species Reactivity	Hu Ms Rt
Specificity	This antibody detects endogenous levels of E2F-1 (Acetyl-K125), It doesn't reacte with total protein.
Immunogen Type	protein
Immunogen Description	Synthesized Acetyl peptide derived from human E2F-1. at AA range: K125
Target Name	E2F-1 (Acetyl-K125)
Other Names	Transcription factor E2F1 (E2F-1) (PBR3) (Retinoblastoma-associated protein 1) (RBAP-1) (Retinoblastoma-binding protein 3) (RBBP-3) (pRB-binding protein E2F-1)
Accession No.	Swiss-Prot:Q01094NCBI Gene ID:1869
Calculated MW	70 kDa
Concentration	1 mg/ml
Formulation	Liquid in PBS containing 50% glycerol, 0.5% BSA and 0.02% sodium azide.
Storage	Store at -20°C

## Application Details

Western blotting: 1B£B1500-1B£B12000

## Images



Western Blot analysis of 1,mouse-liver 2,hela cells using primary antibody diluted at 1:1000(°C overnight). Secondary antibodyB£B1Goat Anti-rabbit IgG IRDye 800( diluted at 1:5000, 25B'Γ£C, 1 hour)

---

Note: This product is for in vitro research use only and is not intended for use in humans or animals.