

TROVE2 Polyclonal Antibody

Catalog No: #30783

Package Size: #30783-1 50ul #30783-2 100ul

Orders: order@signalwayantibody.com

Support: tech@signalwayantibody.com

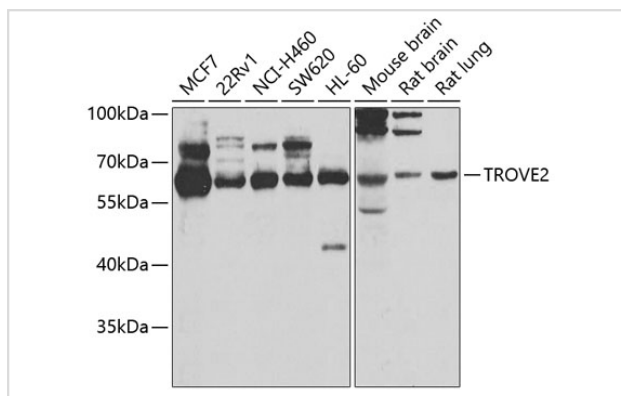
Description

Product Name	TROVE2 Polyclonal Antibody
Host Species	Rabbit
Clonality	Polyclonal
Isotype	IgG
Purification	Affinity purification
Applications	WB
Species Reactivity	Human,Mouse,Rat
Immunogen Description	Recombinant fusion protein of human TROVE2 (NP_004591.2).
Other Names	TROVE2;RO60;RORNP;SSA2
Accession No.	Uniprot:P10155GeneID:6738
Calculated MW	61kDa
SDS-PAGE MW	61kDa
Formulation	PBS with 0.02% sodium azide,50% glycerol,pH7.3.
Storage	Store at -20°C. Avoid freeze / thaw cycles.

Application Details

WB □ 1:500 - 1:2000

Images



Western blot analysis of extracts of various cell lines, using TROVE2 antibody.

Background

RNA-binding protein that binds to misfolded non-coding RNAs, pre-5S rRNA, and several small cytoplasmic RNA molecules known as Y RNAs. May stabilize some of these RNAs and protect them from degradation. Binds to endogenous Alu retroelements which are induced by type I interferon and stimulate porinflammotry cytokine secretion. Regulates the expression of Alu retroelements as well as inflammatory genes.

Note: This product is for in vitro research use only and is not intended for use in humans or animals.