

SEMA3B Polyclonal Antibody

Catalog No: #30788

Package Size: #30788-1 50ul #30788-2 100ul

Orders: order@signalwayantibody.comSupport: tech@signalwayantibody.com

Description

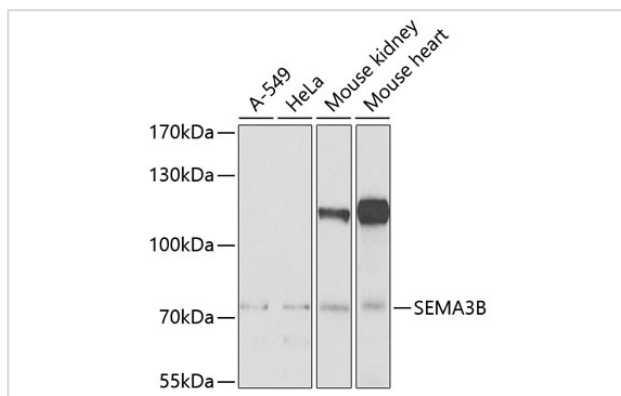
Product Name	SEMA3B Polyclonal Antibody
Host Species	Rabbit
Clonality	Polyclonal
Isotype	IgG
Purification	Affinity purification
Applications	WB
Species Reactivity	Hu,Ms
Immunogen Description	Recombinant fusion protein of human SEMA3B (NP_001005914.1).
Other Names	SEMA3B; LUCA-1; SEMA5; SEMAA; SemA; semaV; semaphorin-3B
Accession No.	Swiss-Prot#:Q13214NCBI Gene ID:7869
Calculated MW	83kDa
Formulation	Avoid freeze / thaw cycles. Buffer: PBS with 50% glycerol, pH7.4.
Storage	Store at -20°C

Application Details

WB □ 1:500 - 1:2000

IHC □ 1:50 - 1:200

Images



Western blot analysis of extracts of various cell lines, using SEMA3B Antibody.

Background

The protein encoded by this gene belongs to the class-3 semaphorin/collapsin family, whose members function in growth cone guidance during neuronal development. This family member inhibits axonal extension and has been shown to act as a tumor suppressor by inducing apoptosis. Alternative splicing of this gene results in multiple transcript variants.

Note: This product is for in vitro research use only and is not intended for use in humans or animals.