

## EAF2 Polyclonal Antibody

Catalog No: #30829

Package Size: #30829-1 50ul #30829-2 100ul

Orders: [order@signalwayantibody.com](mailto:order@signalwayantibody.com)Support: [tech@signalwayantibody.com](mailto:tech@signalwayantibody.com)

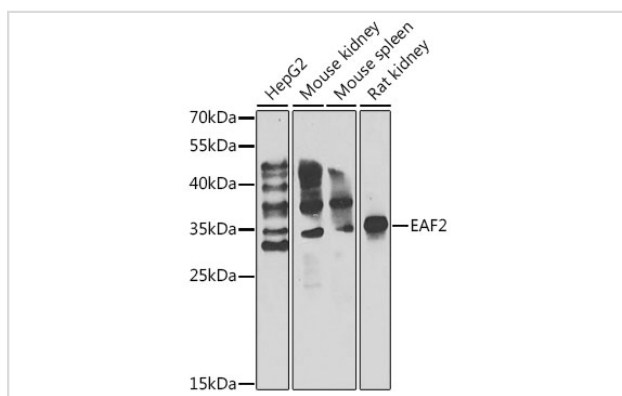
## Description

Product Name	EAF2 Polyclonal Antibody
Host Species	Rabbit
Clonality	Polyclonal
Isotype	IgG
Purification	Affinity purification
Applications	WB,IF
Species Reactivity	Hu,Ms,Rt
Immunogen Description	Recombinant fusion protein of human EAF2 (NP_060926.2).
Other Names	EAF2; BM040; TRAITS; U19; ELL-associated factor 2
Accession No.	Swiss-Prot#:Q96CJ1NCBI Gene ID:55840
Calculated MW	35kDa
Formulation	Avoid freeze / thaw cycles. Buffer: PBS with 50% glycerol, pH7.4.
Storage	Store at -20°C

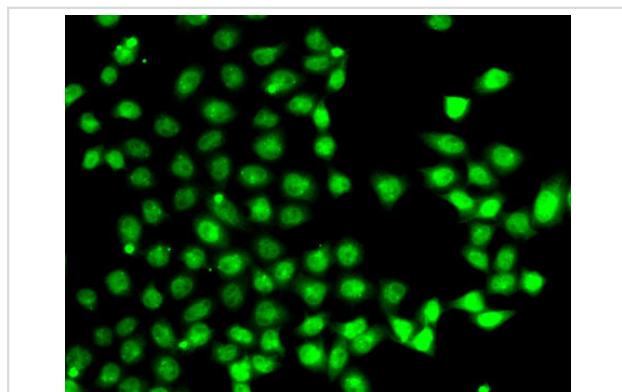
## Application Details

WB □ 1:500 - 1:2000 IF □ 1:50 - 1:100

## Images



Western blot analysis of extracts of various cell lines, using EAF2 antibody.



Immunofluorescence analysis of A-549 cells using EAF2 antibody.

Note: This product is for in vitro research use only and is not intended for use in humans or animals.