

METTL20 Polyclonal Antibody

Catalog No: #30840

Package Size: #30840-1 50ul #30840-2 100ul

Orders: order@signalwayantibody.comSupport: tech@signalwayantibody.com

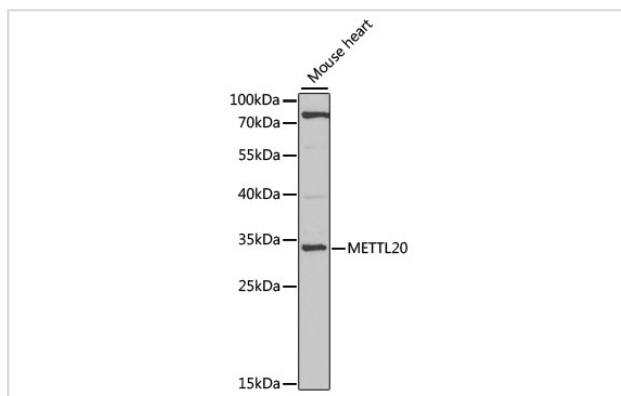
Description

Product Name	METTL20 Polyclonal Antibody
Host Species	Rabbit
Clonality	Polyclonal
Isotype	IgG
Purification	Affinity purification
Applications	WB
Species Reactivity	Mouse,Rat
Immunogen Description	Recombinant fusion protein of human METTL20 (NP_001129335.1).
Other Names	ETFBKMT;C12orf72;ETFB-KMT;METTL20
Accession No.	Uniprot:Q8IXQ9GeneID:254013
Calculated MW	33kDa
SDS-PAGE MW	33kDa
Formulation	PBS with 0.02% sodium azide,50% glycerol,pH7.3.
Storage	Store at -20°C. Avoid freeze / thaw cycles.

Application Details

WB □ 1:500 - 1:2000

Images



Western blot analysis of extracts of mouse heart, using METTL20 antibody.

Background

Protein-lysine methyltransferase that selectively trimethylates the flavoprotein ETFB in mitochondria. Thereby, may negatively regulate the function of ETFB in electron transfer from Acyl-CoA dehydrogenases to the main respiratory chain.

Note: This product is for in vitro research use only and is not intended for use in humans or animals.