

METTL7B Polyclonal Antibody

Catalog No: #30849



Package Size: #30849-1 50ul #30849-2 100ul

Orders: order@signalwayantibody.comSupport: tech@signalwayantibody.com

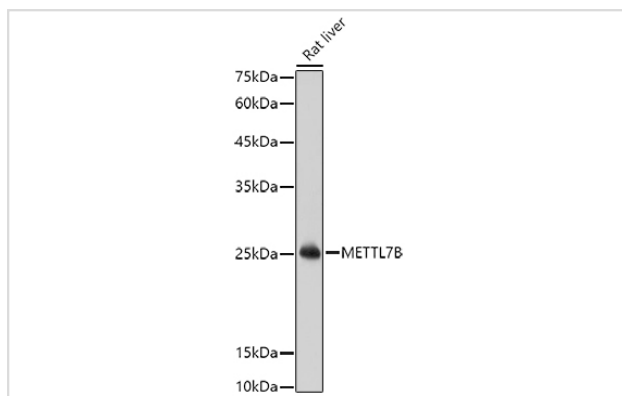
Description

Product Name	METTL7B Polyclonal Antibody
Host Species	Rabbit
Clonality	Polyclonal
Isotype	IgG
Purification	Affinity purification
Applications	WB,IF
Species Reactivity	Human,Mouse,Rat
Immunogen Description	Recombinant fusion protein of human METTL7B (NP_689850.2).
Other Names	METTL7B;ALDI
Accession No.	Uniprot:Q6UX53GeneID:196410
Calculated MW	28kDa
SDS-PAGE MW	28KDa
Formulation	PBS with 0.02% sodium azide,50% glycerol,pH7.3.
Storage	Store at -20°C. Avoid freeze / thaw cycles.

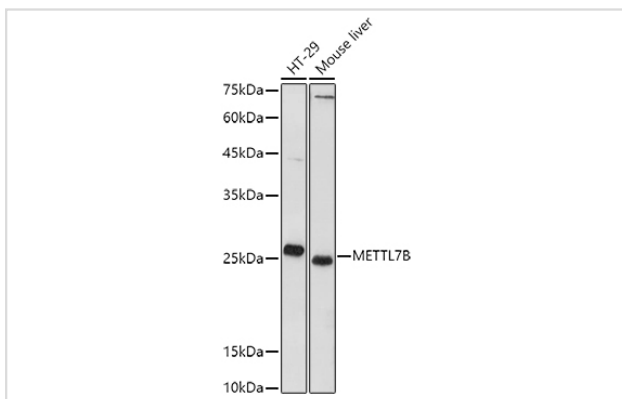
Application Details

WB □ 1:500 - 1:2000 IF □ 1:50 - 1:100

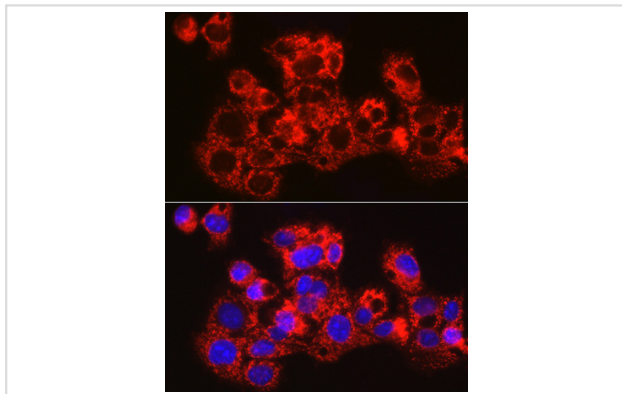
Images



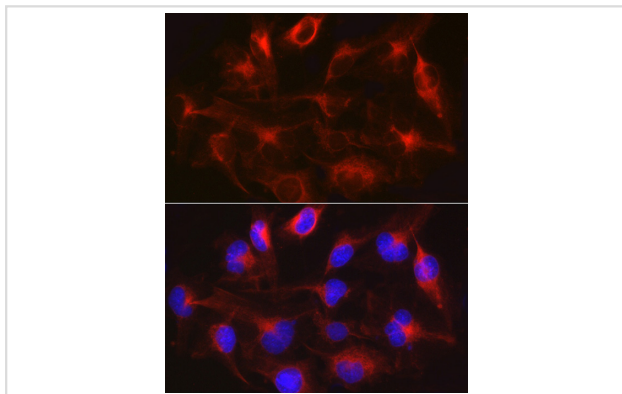
Western blot analysis of extracts of Rat liver, using METTL7B antibody.



Western blot analysis of extracts of various cell lines, using METTL7B antibody.



Immunofluorescence analysis of HepG2 cells using METTL7B Rabbit pAb.



Immunofluorescence analysis of U-251MG cells using METTL7B Rabbit pAb.

Background

Thiol S-methyltransferase that catalyzes the transfer of a methyl group from S-adenosyl-L-methionine to hydrogen sulfide and other thiol compounds including dithiothreitol, 7alpha-thiospirinolactone, L-penicillamine, and captopril.

Note: This product is for in vitro research use only and is not intended for use in humans or animals.