

Calretinin Polyclonal Antibody

Catalog No: #46727

Package Size: #46727-1 50ul #46727-2 100ul

Orders: order@signalwayantibody.comSupport: tech@signalwayantibody.com

Description

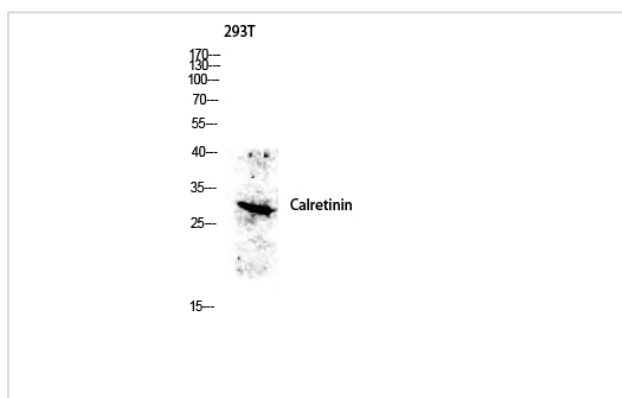
Product Name	Calretinin Polyclonal Antibody
Host Species	Rabbit
Clonality	Polyclonal
Purification	The antibody was affinity-purified from rabbit antiserum by affinity-chromatography using epitope-specific immunogen.
Applications	WB IHC
Species Reactivity	Hu Ms Rt
Specificity	Calretinin Polyclonal Antibody detects endogenous levels of Calretinin
Immunogen Type	protein
Immunogen Description	Synthesized peptide derived from the Internal region of human CALB2
Target Name	Calretinin
Accession No.	Swiss-Prot:P22676NCBI Gene ID:794
Calculated MW	32 kDa
Concentration	1 mg/ml
Formulation	Liquid in PBS containing 50% glycerol, 0.5% BSA and 0.02% sodium azide.
Storage	Store at -20°C

Application Details

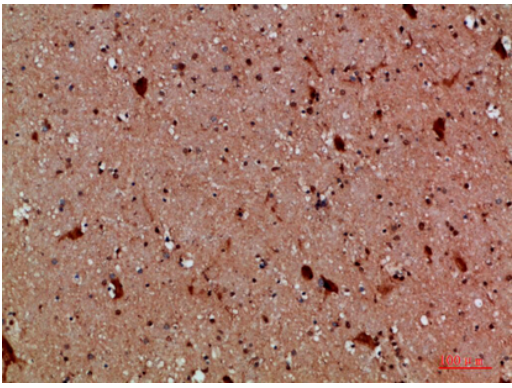
Western blotting: 1B£B1500-1B£B12000

Immunohistochemistry: IHC: 1:100-1:300

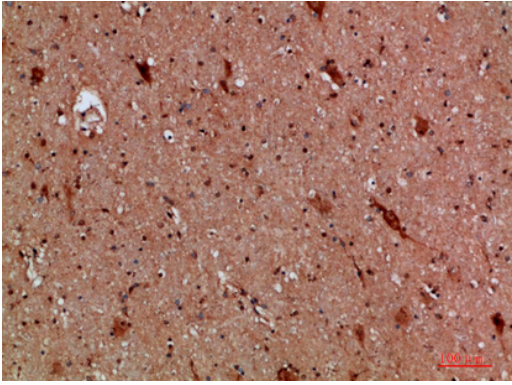
Images



Western blot analysis of 293T lysis using CALB2 antibody. Antibody was diluted at 1:500. Secondary antibody was diluted at 1:20000



Immunohistochemical analysis of paraffin-embedded human-brain, antibody was diluted at 1:200



Immunohistochemical analysis of paraffin-embedded human-brain, antibody was diluted at 1:200

Note: This product is for in vitro research use only and is not intended for use in humans or animals.