

E-Selectin Polyclonal Antibody

Catalog No: #46728

Package Size: #46728-1 50ul #46728-2 100ul

Orders: order@signalwayantibody.com

Support: tech@signalwayantibody.com

Description

Product Name	E-Selectin Polyclonal Antibody
Host Species	Rabbit
Clonality	Polyclonal
Purification	The antibody was affinity-purified from rabbit antiserum by affinity-chromatography using epitope-specific immunogen.
Applications	WB IHC IF ELISA
Species Reactivity	Human;Mouse;Rat
Specificity	E-Selectin Polyclonal Antibody detects endogenous levels of E-Selectin
Immunogen Description	Synthesized peptide derived from E-Selectin . at AA range: INTERNAL
Target Name	E-Selectin
Other Names	selectin E
Accession No.	Swiss-Prot:P16581NCBI Gene ID:6401
Calculated MW	66 kDa
Concentration	1 mg/ml
Formulation	Liquid in PBS containing 50% glycerol, 0.5% BSA and 0.02% sodium azide.
Storage	Store at -20°C

Application Details

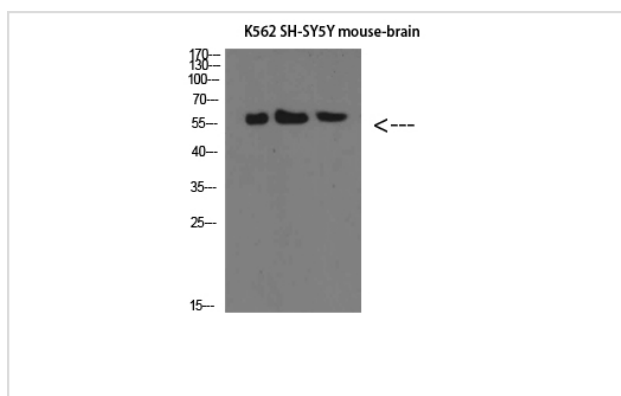
Western blotting: 1µg;500-1µg;2000

Immunohistochemistry: IHC: 1:100-1:300

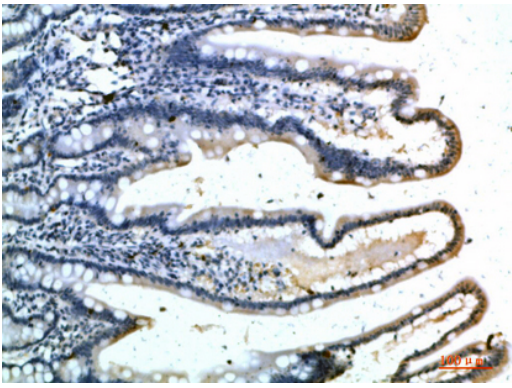
IF 1:50-200

ELISA 1:10000-20000

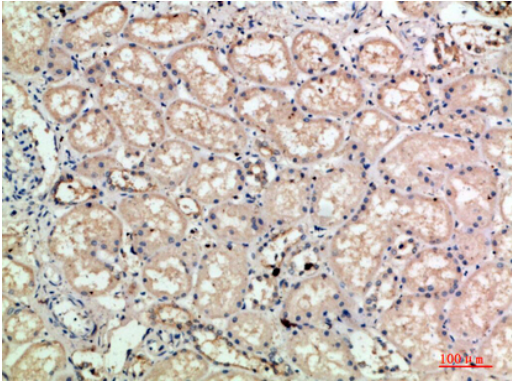
Images



Western Blot analysis of K562 SH-SY5Y mouse-brain cells using E-Selectin Polyclonal Antibody diluted at 1:500. Secondary antibody was diluted at 1:20000



Immunohistochemical analysis of paraffin-embedded human-colon, antibody was diluted at 1:200



Immunohistochemical analysis of paraffin-embedded human-kidney, antibody was diluted at 1:200

Note: This product is for in vitro research use only and is not intended for use in humans or animals.