

TLE1/2/3/4 Polyclonal Antibody

Catalog No: #46729



Package Size: #46729-1 50ul #46729-2 100ul

Orders: order@signalwayantibody.com

Support: tech@signalwayantibody.com

Description

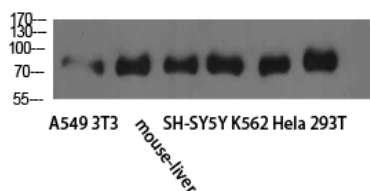
Product Name	TLE1/2/3/4 Polyclonal Antibody
Host Species	Rabbit
Clonality	Polyclonal
Purification	The antibody was affinity-purified from rabbit antiserum by affinity-chromatography using epitope-specific immunogen.
Applications	WB IHC
Species Reactivity	Hu Ms Rt
Specificity	TLE1/2/3/4 Polyclonal Antibody detects endogenous levels of TLE1/2/3/4
Immunogen Type	protein
Immunogen Description	Synthesized peptide derived from TLE1/2/3/4 at AA range: 721-770
Target Name	TLE1/2/3/4
Other Names	similar to transducin-like enhancer of split 1/2/3/4
Accession No.	Swiss-Prot:Q04724/Q04725/Q04726/Q04727NCBI Gene ID:7088
Calculated MW	90 kDa
Concentration	1 mg/ml
Formulation	Liquid in PBS containing 50% glycerol, 0.5% BSA and 0.02% sodium azide.
Storage	Store at -20°C

Application Details

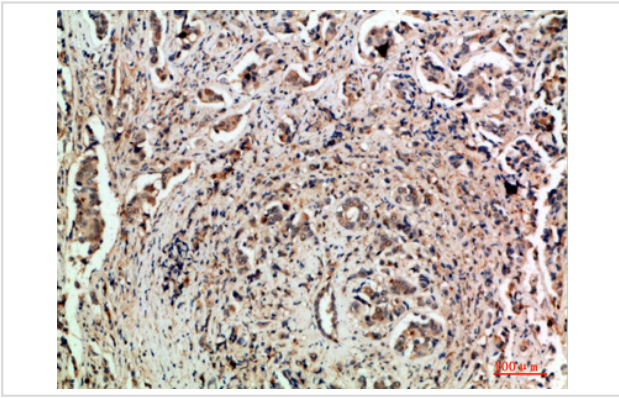
Western blotting: 1B£B1500-1B£B12000

Immunohistochemistry: IHC: 1:100-1:300

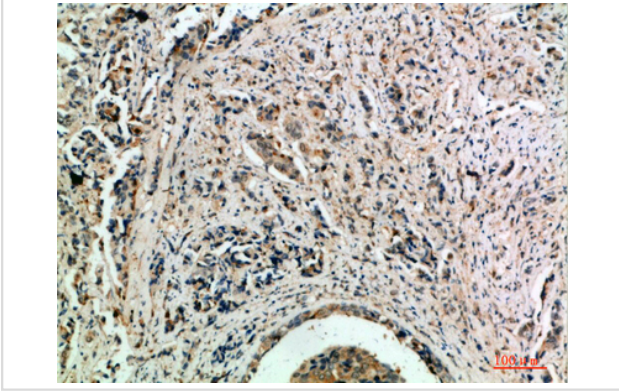
Images



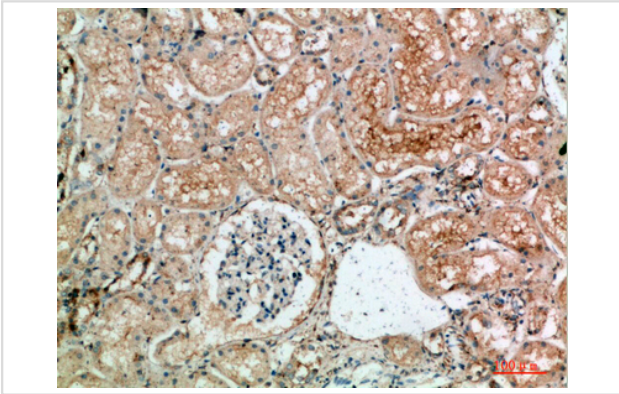
Western Blot analysis of A549 3T3 mouse-liver SH-SY5Y K562 HeLa 293T cells using TLE1/2/3/4 Polyclonal Antibody diluted at 1:2000. Secondary antibody was diluted at 1:20000



Immunohistochemical analysis of paraffin-embedded human-breast-cancer, antibody was diluted at 1:200



Immunohistochemical analysis of paraffin-embedded human-breast-cancer, antibody was diluted at 1:200



Immunohistochemical analysis of paraffin-embedded human-kidney, antibody was diluted at 1:200

Note: This product is for in vitro research use only and is not intended for use in humans or animals.