

METTL2A Polyclonal Antibody

Catalog No: #30881



Package Size: #30881-1 50ul #30881-2 100ul

Orders: order@signalwayantibody.comSupport: tech@signalwayantibody.com

Description

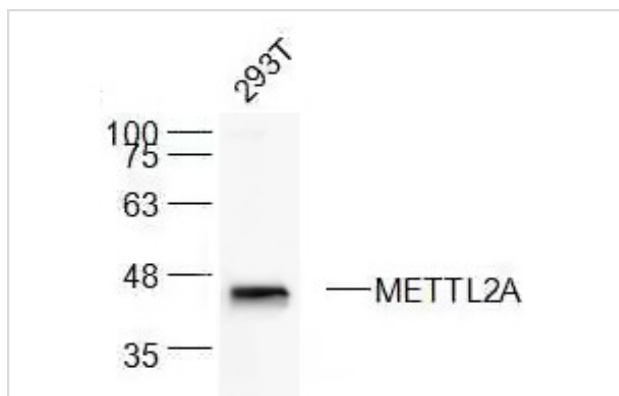
Product Name	METTL2A Polyclonal Antibody
Host Species	Rabbit
Clonality	Polyclonal
Isotype	IgG
Purification	Affinity purification
Applications	WB,IF
Species Reactivity	Hu
Immunogen Description	Recombinant fusion protein of human METTL2A (NP_859076.3).
Other Names	METTL2A; METTL2; methyltransferase like 2A
Accession No.	Swiss-Prot#:Q96IZ6NCBI Gene ID:339175
Calculated MW	44kd
Formulation	Avoid freeze / thaw cycles. Buffer: PBS with 50% glycerol, pH7.4.
Storage	Store at -20°C

Application Details

WB □ 1:500 - 1:2000

IF □ 1:50 - 1:100

Images



Western blot analysis of extracts from 293T cells using METTL2A Polyclonal Antibody.

Note: This product is for in vitro research use only and is not intended for use in humans or animals.