

# YTHDC1 Polyclonal Antibody

Catalog No: #30888



Package Size: #30888-1 50ul #30888-2 100ul

Orders: [order@signalwayantibody.com](mailto:order@signalwayantibody.com)

Support: [tech@signalwayantibody.com](mailto:tech@signalwayantibody.com)

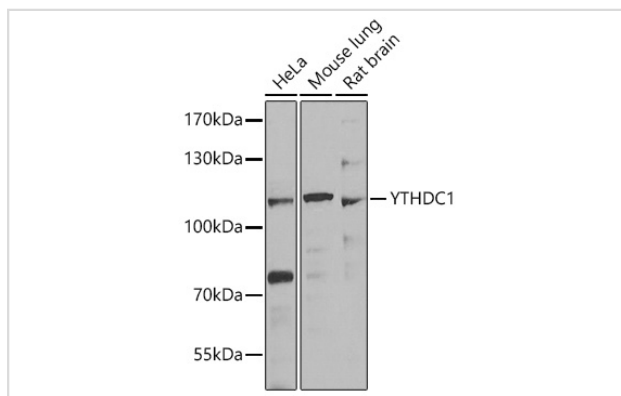
## Description

Product Name	YTHDC1 Polyclonal Antibody
Host Species	Rabbit
Clonality	Polyclonal
Isotype	IgG
Purification	Affinity purification
Applications	WB,IF
Species Reactivity	Hu,Ms,Rt
Immunogen Description	Recombinant fusion protein of human YTHDC1 (NP_001026902.1).
Other Names	YTHDC1; YT521; YT521-B; YTH domain containing 1
Accession No.	Swiss-Prot#:Q96MU7NCBI Gene ID:91746
Calculated MW	118kDa
Formulation	Avoid freeze / thaw cycles. Buffer: PBS with 50% glycerol, pH7.4.
Storage	Store at -20°C

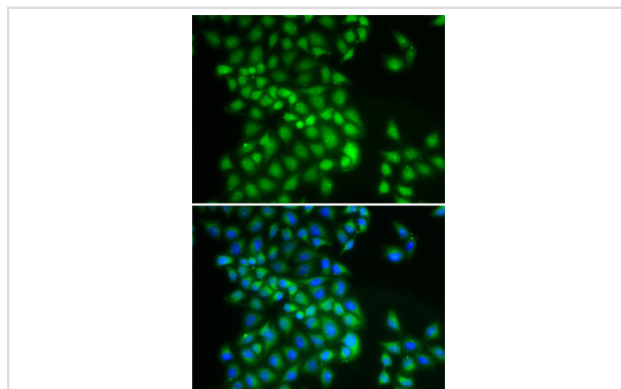
## Application Details

WB □ 1:500 - 1:2000 IF □ 1:50 - 1:100

## Images



Western blot analysis of extracts of various cell lines, using YTHDC1 antibody.



Immunofluorescence analysis of A-549 cells using YTHDC1 antibody.

Note: This product is for in vitro research use only and is not intended for use in humans or animals.