

MTMR14 Polyclonal Antibody

Catalog No: #30942

Package Size: #30942-1 50ul #30942-2 100ul

Orders: order@signalwayantibody.comSupport: tech@signalwayantibody.com

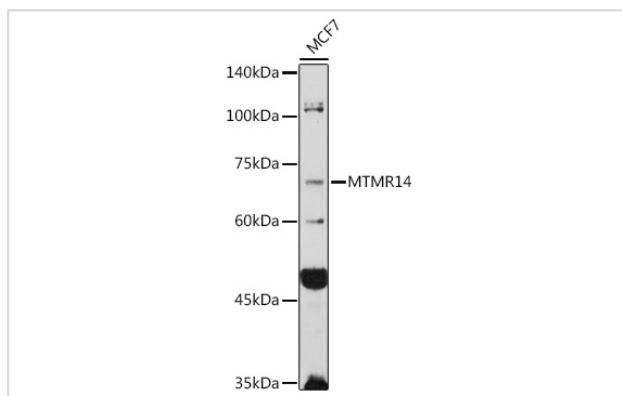
Description

Product Name	MTMR14 Polyclonal Antibody
Host Species	Rabbit
Clonality	Polyclonal
Isotype	IgG
Purification	Affinity purification
Applications	WB,IHC,IF
Species Reactivity	Human,Mouse,Rat
Immunogen Description	Recombinant fusion protein of human MTMR14 (NP_001070993.1).
Other Names	MTMR14;C3orf29
Accession No.	Uniprot:Q8NCE2GeneID:64419
Calculated MW	72kDa
SDS-PAGE MW	72KDa
Formulation	PBS with 0.02% sodium azide,50% glycerol,pH7.3.
Storage	Store at -20°C. Avoid freeze / thaw cycles.

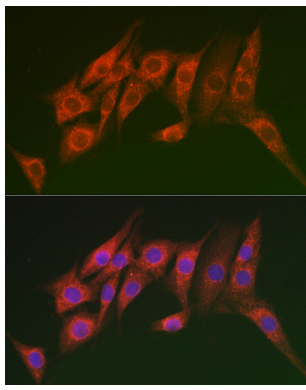
Application Details

WB □ 1:500 - 1:2000 IHC □ 1:50 - 1:200 IF □ 1:50 - 1:200

Images



Western blot analysis of extracts of MCF7 cells, using MTMR14 antibody.



Immunofluorescence analysis of NIH/3T3 cells using MTMR14 Rabbit pAb.

Background

This gene encodes a myotubularin-related protein. The encoded protein is a phosphoinositide phosphatase that specifically dephosphorylates phosphatidylinositol 3,5-bisphosphate and phosphatidylinositol 3-phosphate. Mutations in this gene are correlated with autosomal dominant centronuclear myopathy. Alternate splicing results in multiple transcript variants. A pseudogene of this gene is found on chromosome 18.

Note: This product is for in vitro research use only and is not intended for use in humans or animals.