

# ZNF169 Polyclonal Antibody

Catalog No: #30945



Package Size: #30945-1 50ul #30945-2 100ul

Orders: [order@signalwayantibody.com](mailto:order@signalwayantibody.com)

Support: [tech@signalwayantibody.com](mailto:tech@signalwayantibody.com)

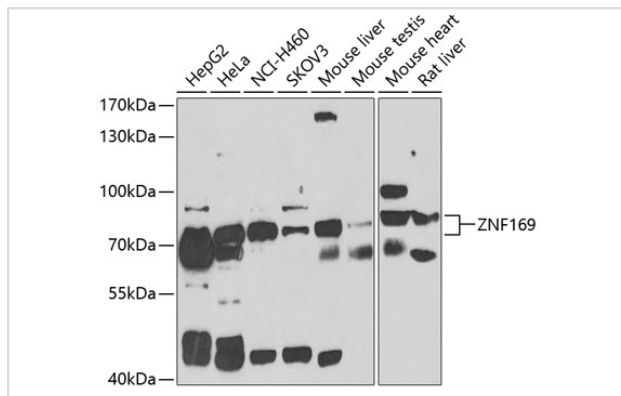
## Description

Product Name	ZNF169 Polyclonal Antibody
Host Species	Rabbit
Clonality	Polyclonal
Isotype	IgG
Purification	Affinity purification
Applications	WB
Species Reactivity	Human,Mouse,Rat
Immunogen Description	Recombinant fusion protein of human ZNF169 (NP_919301.2).
Other Names	ZNF169
Accession No.	Uniprot:Q14929GeneID:169841
Calculated MW	72kDa
SDS-PAGE MW	72kDa
Formulation	PBS with 0.02% sodium azide,50% glycerol,pH7.3.
Storage	Store at -20°C. Avoid freeze / thaw cycles.

## Application Details

WB □ 1:500 - 1:2000

## Images



Western blot analysis of extracts of various cell lines, using ZNF169 antibody.

## Background

May be involved in transcriptional regulation.

---

Note: This product is for in vitro research use only and is not intended for use in humans or animals.