

ELMOD3 Polyclonal Antibody

Catalog No: #30956

Package Size: #30956-1 50ul #30956-2 100ul

Orders: order@signalwayantibody.com

Support: tech@signalwayantibody.com

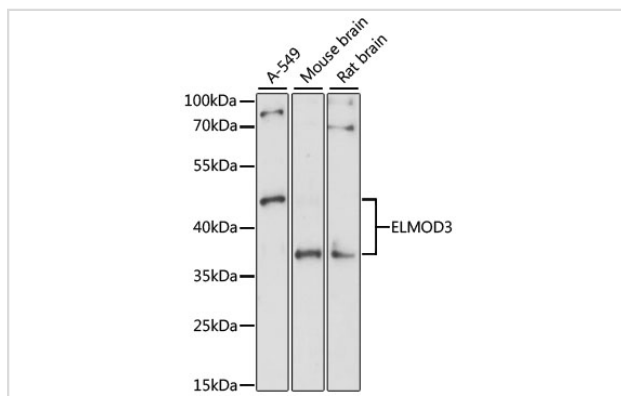
Description

Product Name	ELMOD3 Polyclonal Antibody
Host Species	Rabbit
Clonality	Polyclonal
Isotype	IgG
Purification	Affinity purification
Applications	WB
Species Reactivity	Hu,Ms,Rt
Immunogen Description	Recombinant fusion protein of human ELMOD3 (NP_001128493.1).
Other Names	ELMOD3; DFNB88; LST3; RBED1; RBM29; ELMO domain containing 3
Accession No.	Swiss-Prot#:Q96FG2NCBI Gene ID:84173
Calculated MW	38/43kDa
Formulation	Avoid freeze / thaw cycles. Buffer: PBS with 50% glycerol, pH7.4.
Storage	Store at -20°C

Application Details

WB □ 1:500 - 1:2000

Images



Western blot analysis of extracts of various cell lines, using ELMOD3 antibody.

Background

This gene encodes a member of the engulfment and cell motility family of GTPase-activating proteins that regulate Arf GTPase proteins. Members of this family are defined by a conserved engulfment and cell motility domain. In rat cochlea, the encoded protein is found in stereocilia, kinocilia and cuticular plate of developing hair cells suggesting a function for this protein in cochlear sensory cells. An allelic variant of this family has been associated with autosomal recessive nonsyndromic deafness-88 in humans. Alternative splicing results in multiple transcript variants.

Note: This product is for in vitro research use only and is not intended for use in humans or animals.