

TET3 Polyclonal Antibody

Catalog No: #30984



Package Size: #30984-1 50ul #30984-2 100ul

Orders: order@signalwayantibody.com

Support: tech@signalwayantibody.com

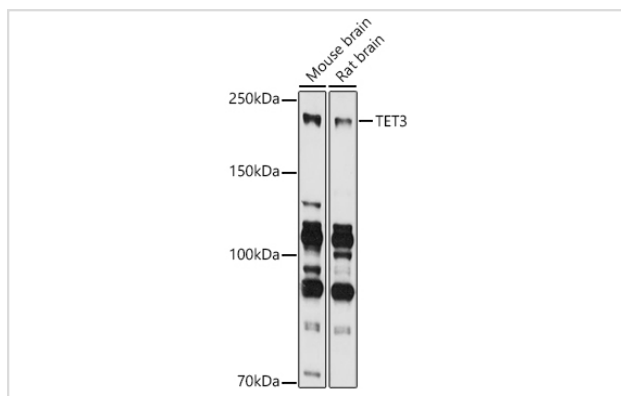
Description

Product Name	TET3 Polyclonal Antibody
Host Species	Rabbit
Clonality	Polyclonal
Isotype	IgG
Purification	Affinity purification
Applications	WB,IHC,IF
Species Reactivity	Human,Mouse,Rat
Immunogen Description	Recombinant fusion protein of human TET3 (NP_001274420.1).
Other Names	TET3;hCG_40738;TET3
Accession No.	Uniprot:O43151GeneID:200424
Calculated MW	200kDa
SDS-PAGE MW	230KDa/179KDa
Formulation	PBS with 0.02% sodium azide,50% glycerol,pH7.3.
Storage	Store at -20°C. Avoid freeze / thaw cycles.

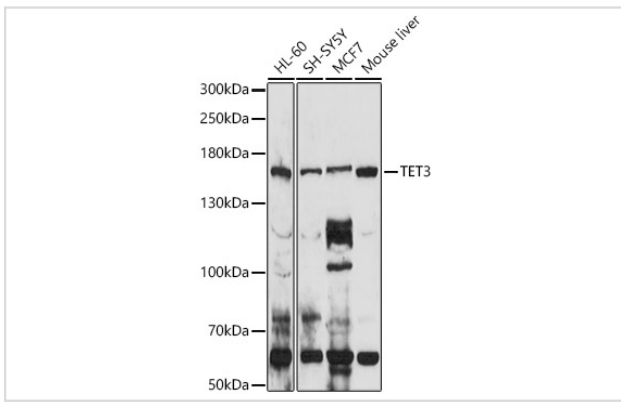
Application Details

WB □ 1:500 - 1:2000 IHC □ 1:50 - 1:200 IF □ 1:50 - 1:200

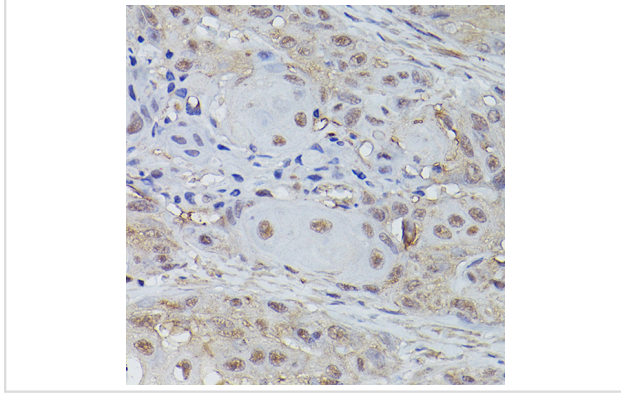
Images



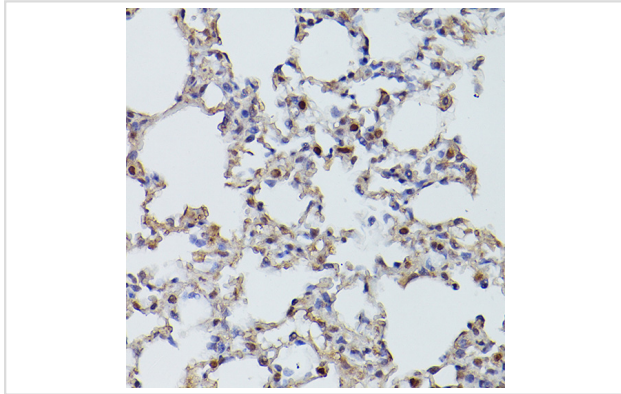
Western blot analysis of extracts of various cell lines, using TET3 antibody.



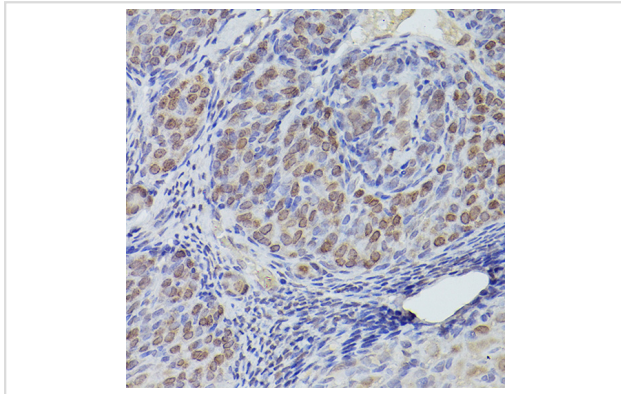
Western blot analysis of extracts of various cell lines, using TET3 antibody.



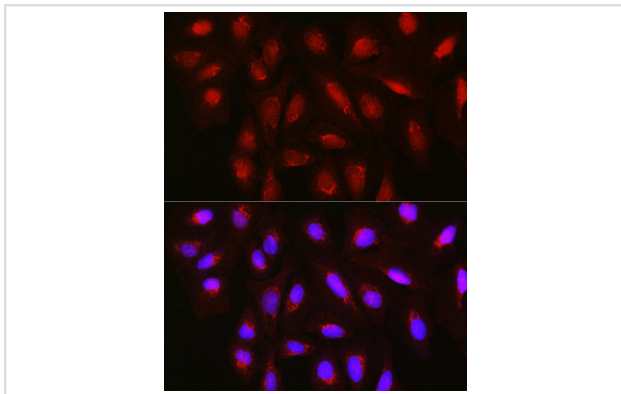
Immunohistochemistry of paraffin-embedded human esophageal cancer using TET3 Rabbit pAb.



Immunohistochemistry of paraffin-embedded mouse lung using TET3 Rabbit pAb.



Immunohistochemistry of paraffin-embedded rat ovary using TET3 Rabbit pAb.



Immunofluorescence analysis of U2OS cells using TET3 Rabbit pAb.

Background

Members of the ten-eleven translocation (TET) gene family, including TET3, play a role in the DNA methylation process (Langemeijer et al., 2009 [PubMed 19923888]).[supplied by OMIM, Nov 2010]

Note: This product is for in vitro research use only and is not intended for use in humans or animals.