

LDHB Polyclonal Antibody

Catalog No: #30988

Package Size: #30988-1 50ul #30988-2 100ul

Orders: order@signalwayantibody.com

Support: tech@signalwayantibody.com

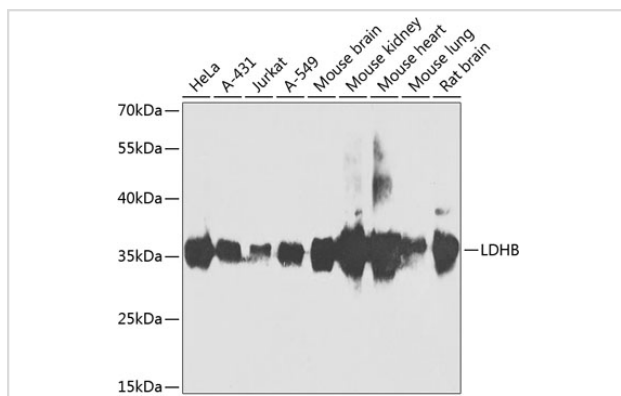
Description

Product Name	LDHB Polyclonal Antibody
Host Species	Rabbit
Clonality	Polyclonal
Isotype	IgG
Purification	Affinity purification
Applications	WB
Species Reactivity	Human,Mouse,Rat
Immunogen Description	Recombinant fusion protein of human LDHB (NP_002291.1).
Other Names	LDHB;HEL-S-281;LDH-B;LDH-H;LDHBD;TRG-5
Accession No.	Uniprot:P07195GeneID:3945
Calculated MW	37kDa
SDS-PAGE MW	37kDa
Formulation	PBS with 0.02% sodium azide,50% glycerol,pH7.3.
Storage	Store at -20°C. Avoid freeze / thaw cycles.

Application Details

WB □ 1:500 - 1:2000

Images



Western blot analysis of extracts of various cell lines, using LDHB antibody.

Background

This gene encodes the B subunit of lactate dehydrogenase enzyme, which catalyzes the interconversion of pyruvate and lactate with concomitant interconversion of NADH and NAD⁺ in a post-glycolysis process. Alternatively spliced transcript variants have been found for this gene. Recent studies have shown that a C-terminally extended isoform is produced by use of an alternative in-frame translation termination codon via a stop codon readthrough mechanism, and that this isoform is localized in the peroxisomes. Mutations in this gene are associated with lactate dehydrogenase B deficiency. Pseudogenes have been identified on chromosomes X, 5 and 13.

Published Papers

el at., Identification of lactate metabolism-related genes for glioma metabolic reprogramming, , (2022)

PMID:

Note: This product is for in vitro research use only and is not intended for use in humans or animals.