

DLX6 Polyclonal Antibody

Catalog No: #30997

Package Size: #30997-1 50ul #30997-2 100ul

Orders: order@signalwayantibody.comSupport: tech@signalwayantibody.com

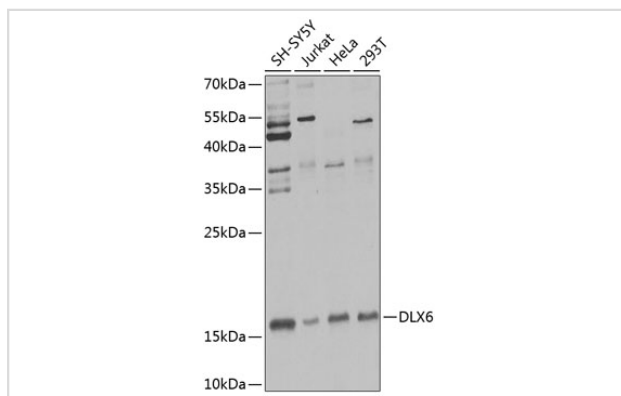
Description

Product Name	DLX6 Polyclonal Antibody
Host Species	Rabbit
Clonality	Polyclonal
Isotype	IgG
Purification	Affinity purification
Applications	WB
Species Reactivity	Human
Immunogen Description	Recombinant fusion protein of human DLX6 (NP_005213.3).
Other Names	DLX6; homeobox protein DLX-6
Accession No.	Swiss-Prot#:P56179NCBI Gene ID:1750
Calculated MW	20kDa
Formulation	Avoid freeze / thaw cycles. Buffer: PBS with 50% glycerol, pH7.4.
Storage	Store at -20°C

Application Details

WB □ 1:500 - 1:2000

Images



Western blot analysis of extracts of various cell lines, using DLX6 antibody at 1:1000 dilution.

Background

This gene encodes a member of a homeobox transcription factor gene family similar to the *Drosophila* distal-less gene. This family is comprised of at least 6 different members that encode proteins with roles in forebrain and craniofacial development. This gene is in a tail-to-tail configuration with another member of the family on the long arm of chromosome 7.

Note: This product is for in vitro research use only and is not intended for use in humans or animals.