

## ALB Polyclonal Antibody

Catalog No: #46741



Package Size: #46741-1 50ul #46741-2 100ul

Orders: [order@signalwayantibody.com](mailto:order@signalwayantibody.com)Support: [tech@signalwayantibody.com](mailto:tech@signalwayantibody.com)

## Description

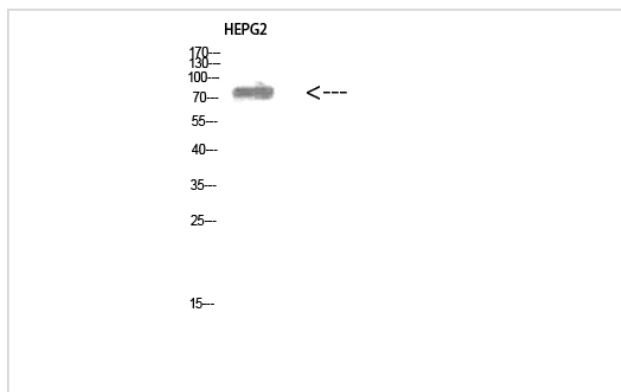
Product Name	ALB Polyclonal Antibody
Host Species	Rabbit
Clonality	Polyclonal
Purification	The antibody was affinity-purified from rabbit antiserum by affinity-chromatography using epitope-specific immunogen.
Applications	WB IHC
Species Reactivity	Hu
Specificity	ALB Polyclonal Antibody detects endogenous levels of ALB
Immunogen Type	protein
Immunogen Description	Synthesized peptide derived from ALB at AA range: 511-560
Target Name	ALB
Other Names	Serum albumin
Accession No.	Swiss-Prot:P02768NCBI Gene ID:213
Calculated MW	70 kDa
Concentration	1 mg/ml
Formulation	Liquid in PBS containing 50% glycerol, 0.5% BSA and 0.02% sodium azide.
Storage	Store at -20°C

## Application Details

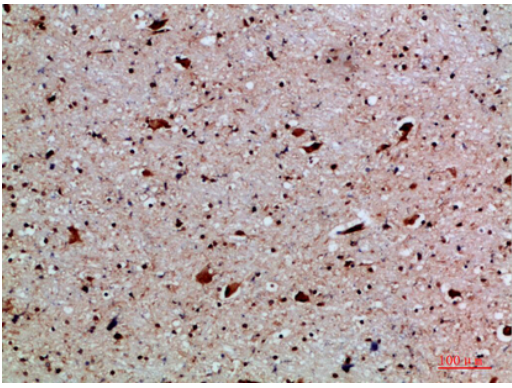
Western blotting: 1B£B'1500-1B£B'12000

Immunohistochemistry: IHC: 1:100-1:300

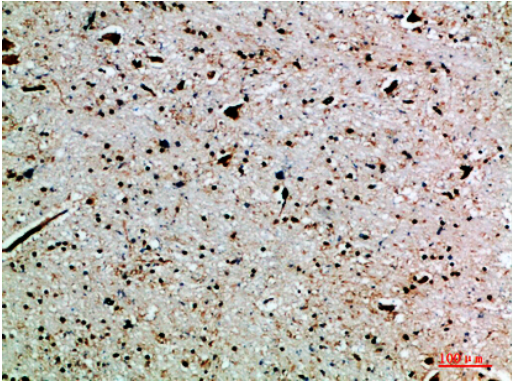
## Images



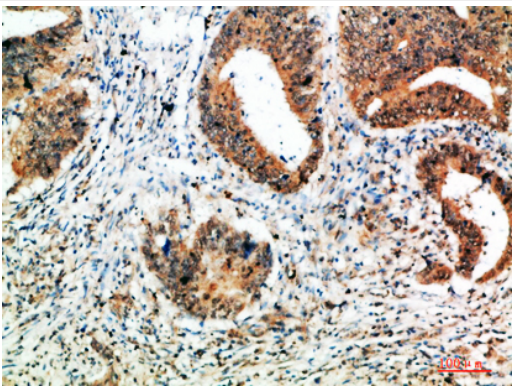
Western Blot analysis of HEPG2 cells using ALB Polyclonal Antibody diluted at 1:500. Secondary antibody was diluted at 1:20000



Immunohistochemical analysis of paraffin-embedded human-brain, antibody was diluted at 1:200



Immunohistochemical analysis of paraffin-embedded human-brain, antibody was diluted at 1:200



Immunohistochemical analysis of paraffin-embedded human-colon-cancer, antibody was diluted at 1:200

---

Note: This product is for in vitro research use only and is not intended for use in humans or animals.