

## Caldesmon Polyclonal Antibody

Catalog No: #46742



Package Size: #46742-1 50ul #46742-2 100ul

Orders: [order@signalwayantibody.com](mailto:order@signalwayantibody.com)Support: [tech@signalwayantibody.com](mailto:tech@signalwayantibody.com)

## Description

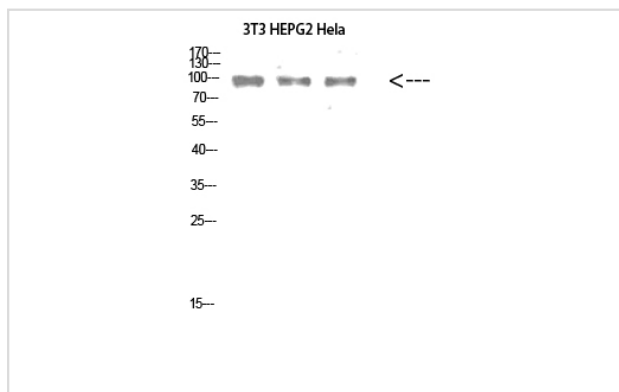
Product Name	Caldesmon Polyclonal Antibody
Host Species	Rabbit
Clonality	Polyclonal
Purification	The antibody was affinity-purified from rabbit antiserum by affinity-chromatography using epitope-specific immunogen.
Applications	WB IHC
Species Reactivity	Hu Ms Rt
Specificity	Caldesmon Polyclonal Antibody detects endogenous levels of Caldesmon
Immunogen Type	protein
Immunogen Description	Synthesized peptide derived from Caldesmon at AA range: 1-50
Target Name	Caldesmon
Other Names	Caldesmon (CDM)
Accession No.	Swiss-Prot:Q05682NCBI Gene ID:800
Calculated MW	95 kDa
Concentration	1 mg/ml
Formulation	Liquid in PBS containing 50% glycerol, 0.5% BSA and 0.02% sodium azide.
Storage	Store at -20°C

## Application Details

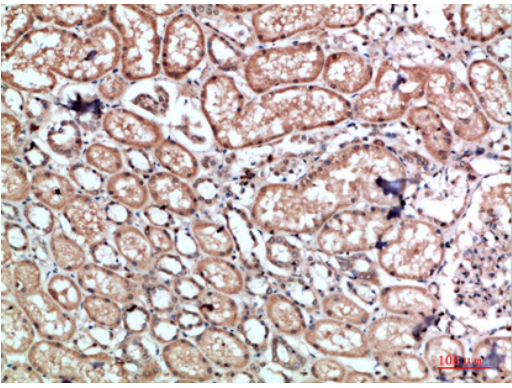
Western blotting: 1B£B1500-1B£B12000

Immunohistochemistry: IHC: 1:100-1:300

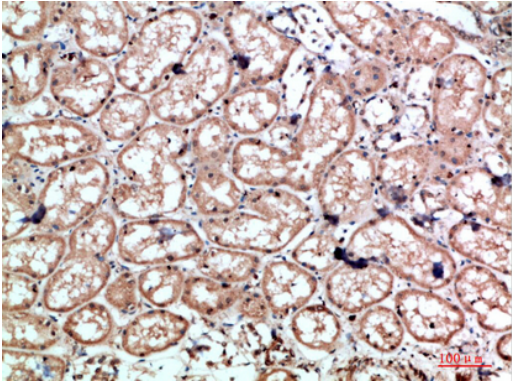
## Images



Western Blot analysis of 3T3 HEPG2 Hela cells using Caldesmon Polyclonal Antibody diluted at 1:2000. Secondary antibody was diluted at 1:20000



Immunohistochemical analysis of paraffin-embedded human-kidney, antibody was diluted at 1:200



Immunohistochemical analysis of paraffin-embedded human-kidney, antibody was diluted at 1:200

---

Note: This product is for in vitro research use only and is not intended for use in humans or animals.