

EIF2B1 Polyclonal Antibody

Catalog No: #31370



Package Size: #31370-1 50ul #31370-2 100ul

Orders: order@signalwayantibody.com

Support: tech@signalwayantibody.com

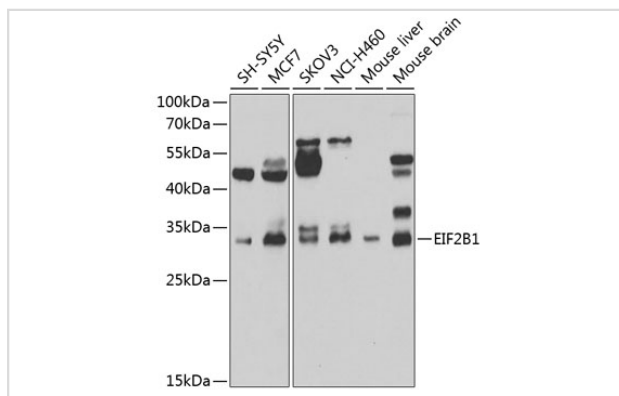
Description

Product Name	EIF2B1 Polyclonal Antibody
Host Species	Rabbit
Clonality	Polyclonal
Isotype	IgG
Purification	Affinity purification
Applications	WB,IF
Species Reactivity	Hu,Ms
Immunogen Description	Recombinant fusion protein of human EIF2B1 (NP_001405.1).
Other Names	EIF2B1; EIF2B; EIF2BA; translation initiation factor eIF-2B subunit alpha
Accession No.	Swiss-Prot#:Q14232NCBI Gene ID:1967
Calculated MW	34kDa
Formulation	Avoid freeze / thaw cycles. Buffer: PBS with 50% glycerol, pH7.4.
Storage	Store at -20°C

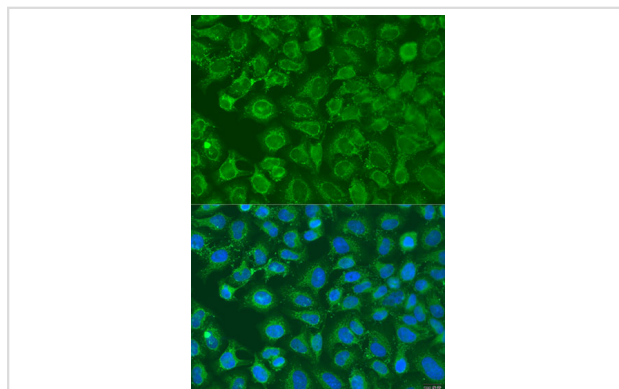
Application Details

WB 1:500 - 1:2000 IF 1:50 - 1:200

Images



Western blot analysis of extracts of various cell lines, using EIF2B1 antibody.



Immunofluorescence analysis of U2OS cells using EIF2B1 antibody.

Background

This gene encodes one of five subunits of eukaryotic translation initiation factor 2B (EIF2B), a GTP exchange factor for eukaryotic initiation factor 2 and an essential regulator for protein synthesis. Mutations in this gene and the genes encoding other EIF2B subunits have been associated with leukoencephalopathy with vanishing white matter.

Note: This product is for in vitro research use only and is not intended for use in humans or animals.