

MTX2 Polyclonal Antibody

Catalog No: #31386



Package Size: #31386-1 50ul #31386-2 100ul

Orders: order@signalwayantibody.com

Support: tech@signalwayantibody.com

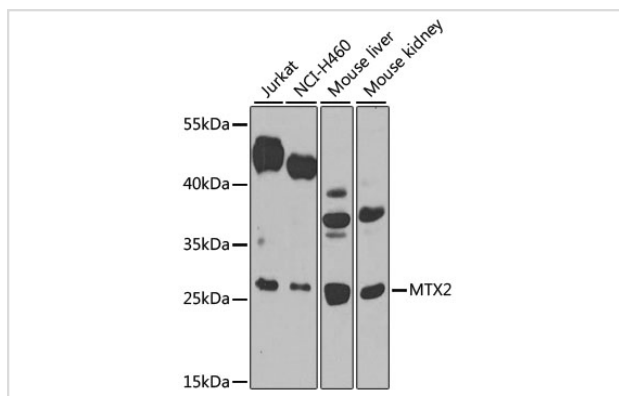
Description

Product Name	MTX2 Polyclonal Antibody
Host Species	Rabbit
Clonality	Polyclonal
Isotype	IgG
Purification	Affinity purification
Applications	WB,IF
Species Reactivity	Human,Mouse,Rat
Immunogen Description	Recombinant fusion protein of human MTX2 (NP_006545.1).
Other Names	MTX2;metaxin-2
Accession No.	Uniprot:O75431GeneID:10651
Calculated MW	29kDa
SDS-PAGE MW	29kDa
Formulation	PBS with 0.02% sodium azide,50% glycerol,pH7.3.
Storage	Store at -20°C. Avoid freeze / thaw cycles.

Application Details

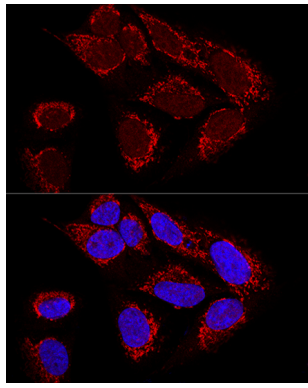
WB □ 1:500 - 1:2000 IF □ 1:50 - 1:200

Images



Western blot analysis of extracts of various cell lines, using MTX2 antibody.

Confocal immunofluorescence analysis of U2OS cells using
MTX2 Polyclonal Antibody.



Background

The protein encoded by this gene is highly similar to the metaxin 2 protein from mouse, which has been shown to interact with the mitochondrial membrane protein metaxin 1. Because of this similarity, it is thought that the encoded protein is peripherally associated with the cytosolic face of the outer mitochondrial membrane, and that it is involved in the import of proteins into the mitochondrion. Alternative splicing results in multiple transcript variants. A related pseudogene has been identified on chromosome 7.

Note: This product is for in vitro research use only and is not intended for use in humans or animals.