

EFHC1 Polyclonal Antibody

Catalog No: #31411

Package Size: #31411-1 50ul #31411-2 100ul

Orders: order@signalwayantibody.comSupport: tech@signalwayantibody.com

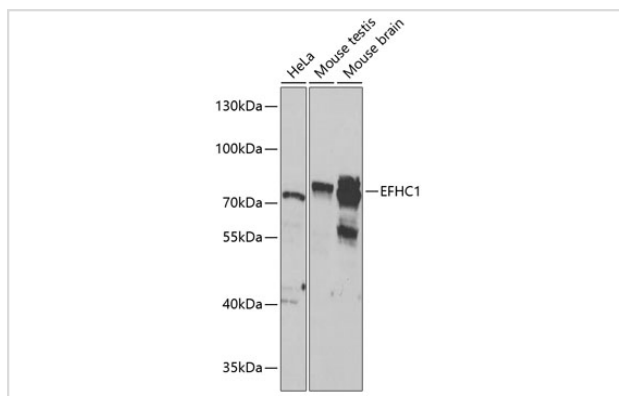
Description

Product Name	EFHC1 Polyclonal Antibody
Host Species	Rabbit
Clonality	Polyclonal
Isotype	IgG
Purification	Affinity purification
Applications	WB
Species Reactivity	Human,Mouse,Rat
Immunogen Description	Recombinant fusion protein of human EFHC1 (NP_060570.2).
Other Names	EFHC1;EJM1;dJ304B14.2
Accession No.	Uniprot:Q5JVL4GeneID:114327
Calculated MW	74kDa
SDS-PAGE MW	74kDa
Formulation	PBS with 0.02% sodium azide,50% glycerol,pH7.3.
Storage	Store at -20°C. Avoid freeze / thaw cycles.

Application Details

WB □ 1:500 - 1:2000

Images



Western blot analysis of extracts of various cell lines, using EFHC1 antibody.

Background

This gene encodes an EF-hand-containing calcium binding protein. The encoded protein likely plays a role in calcium homeostasis. Mutations in this gene have been associated with susceptibility to juvenile myoclonic epilepsy and juvenile absence epilepsy. Alternatively spliced transcript variants have been described.

Note: This product is for in vitro research use only and is not intended for use in humans or animals.