

# OSGEPL1 Polyclonal Antibody

Catalog No: #31421



Package Size: #31421-1 50ul #31421-2 100ul

Orders: [order@signalwayantibody.com](mailto:order@signalwayantibody.com)

Support: [tech@signalwayantibody.com](mailto:tech@signalwayantibody.com)

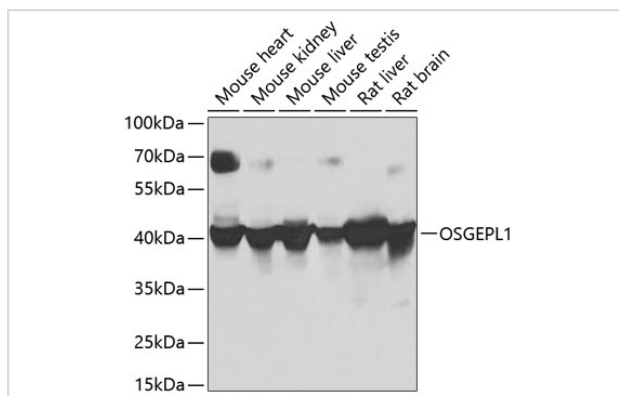
## Description

Product Name	OSGEPL1 Polyclonal Antibody
Host Species	Rabbit
Clonality	Polyclonal
Isotype	IgG
Purification	Affinity purification
Applications	WB,IHC
Species Reactivity	Human,Mouse,Rat
Immunogen Description	Recombinant fusion protein of human OSGEPL1 (NP_071748.2).
Other Names	OSGEPL1;OSGEPL;Qri7
Accession No.	Uniprot:Q9H4B0GeneID:64172
Calculated MW	45kDa
SDS-PAGE MW	45kDa
Formulation	PBS with 0.02% sodium azide,50% glycerol,pH7.3.
Storage	Store at -20°C. Avoid freeze / thaw cycles.

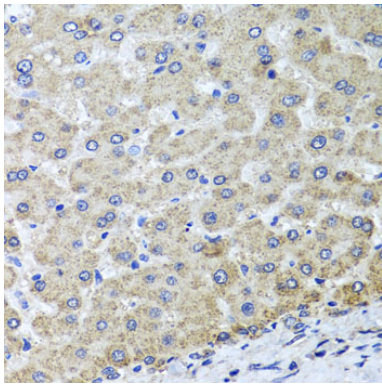
## Application Details

WB □ 1:500 - 1:2000 IHC □ 1:50 - 1:100

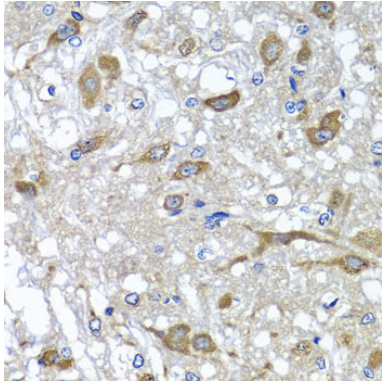
## Images



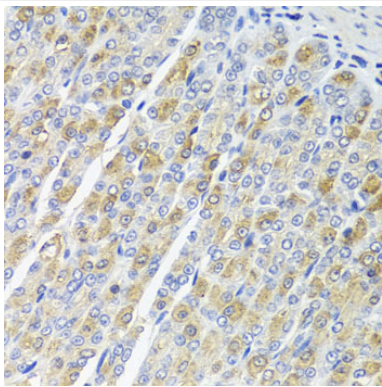
Western blot analysis of extracts of various cell lines, using OSGEPL1 antibody.



Immunohistochemistry of paraffin-embedded human liver damage using OSGEPL1 antibody.



Immunohistochemistry of paraffin-embedded rat brain using OSGEPL1 antibody.



Immunohistochemistry of paraffin-embedded mouse stomach using OSGEPL1 antibody.

## Background

Required for the formation of a threonylcarbamoyl group on adenosine at position 37 (t(6A37 in mitochondrial tRNAs that read codons beginning with adenine. Probably involved in the transfer of the threonylcarbamoyl moiety of threonylcarbamoyl-AMP (TC-AMP to the N6 group of A37. Involved in mitochondrial genome maintenance.

Note: This product is for in vitro research use only and is not intended for use in humans or animals.