

ERCC4 Polyclonal Antibody

Catalog No: #31442

Package Size: #31442-1 50ul #31442-2 100ul

Orders: order@signalwayantibody.com

Support: tech@signalwayantibody.com

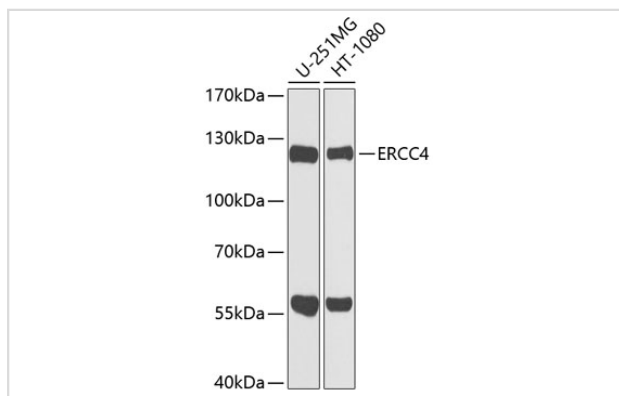
Description

| | |
|-----------------------|---|
| Product Name | ERCC4 Polyclonal Antibody |
| Host Species | Rabbit |
| Clonality | Polyclonal |
| Isotype | IgG |
| Purification | Affinity purification |
| Applications | WB |
| Species Reactivity | Human,Mouse,Rat |
| Immunogen Description | A synthetic peptide of human ERCC4 (NP_005227.1). |
| Other Names | ERCC4; ERCC11; FANCC; RAD1; XFEPS; XPF; DNA repair endonuclease XPF |
| Accession No. | Swiss-Prot#:Q92889NCBI Gene ID:2072 |
| Calculated MW | 120kDa |
| Formulation | Avoid freeze / thaw cycles. Buffer: PBS with 50% glycerol, pH7.4. |
| Storage | Store at -20°C |

Application Details

WB □ 1:500 - 1:2000 IP □ 1:20 - 1:50

Images



Western blot analysis of extracts of various cell lines, using ERCC4 antibody at 1:1000 dilution.

Background

The protein encoded by this gene forms a complex with ERCC1 and is involved in the 5' incision made during nucleotide excision repair. This complex is a structure specific DNA repair endonuclease that interacts with EME1. Defects in this gene are a cause of xeroderma pigmentosum complementation group F (XP-F), or xeroderma pigmentosum VI (XP6).

Note: This product is for in vitro research use only and is not intended for use in humans or animals.