

NUDT15 Polyclonal Antibody

Catalog No: #31526



Package Size: #31526-1 50ul #31526-2 100ul

Orders: order@signalwayantibody.comSupport: tech@signalwayantibody.com

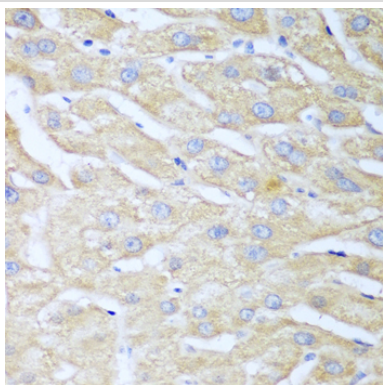
Description

Product Name	NUDT15 Polyclonal Antibody
Host Species	Rabbit
Clonality	Polyclonal
Isotype	IgG
Purification	Affinity purification
Applications	WB,IHC
Species Reactivity	Human,Mouse,Rat
Immunogen Description	Recombinant fusion protein of human NUDT15 (NP_060753.1).
Other Names	NUDT15; MTH2; NUDT15D; nudix hydrolase 15
Accession No.	Swiss-Prot#:Q9NV35NCBI Gene ID:55270
Calculated MW	19kDa
Formulation	Avoid freeze / thaw cycles. Buffer: PBS with 50% glycerol, pH7.4.
Storage	Store at -20°C

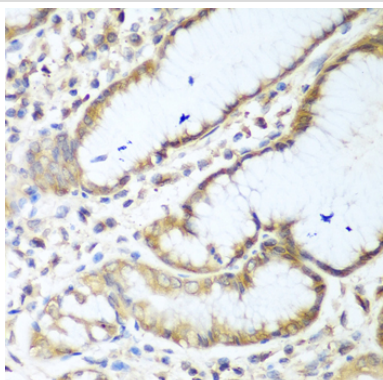
Application Details

WB □ 1:500 - 1:2000 IHC □ 1:50 - 1:100

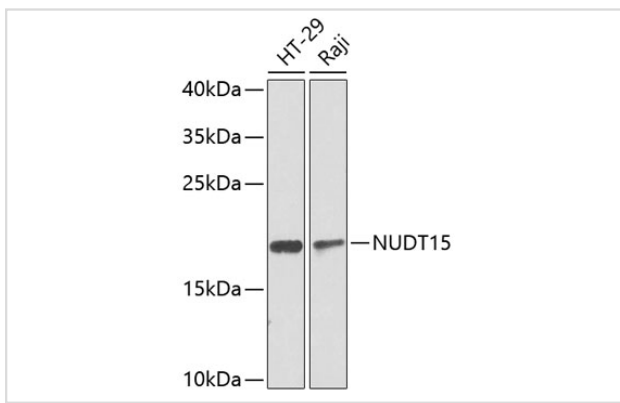
Images



Immunohistochemistry of paraffin-embedded human liver using NUDT15 antibody at dilution of 1:100 (40x lens).



Immunohistochemistry of paraffin-embedded human stomach using NUDT15 antibody at dilution of 1:100 (40x lens).



Western blot analysis of extracts of various cell lines, using NUDT15 antibody at 1:1000 dilution.

Background

This gene encodes an enzyme that belongs to the Nudix hydrolase superfamily. Members of this superfamily catalyze the hydrolysis of nucleoside diphosphates, including substrates like 8-oxo-dGTP, which are a result of oxidative damage, and can induce base mispairing during DNA replication, causing transversions. The encoded enzyme is a negative regulator of thiopurine activation and toxicity. Mutations in this gene result in poor metabolism of thiopurines, and are associated with thiopurine-induced early leukopenia. Multiple pseudogenes of this gene have been identified.

Published Papers

el at., MTH1 protects platelet mitochondria from oxidative damage and regulates platelet function and thrombosis In Nat Commun On 2023 Aug 10 by Yangyang Ding, Xiang Gui et al. PMID:37563135, (2023)

[PMID:37563135](#)

Note: This product is for in vitro research use only and is not intended for use in humans or animals.