

CKR-5 Polyclonal Antibody

Catalog No: #46762



Package Size: #46762-1 50ul #46762-2 100ul

Orders: order@signalwayantibody.com

Support: tech@signalwayantibody.com

Description

| | |
|-----------------------|--|
| Product Name | CKR-5 Polyclonal Antibody |
| Host Species | Rabbit |
| Clonality | Polyclonal |
| Purification | The antibody was affinity-purified from rabbit serum by affinity-chromatography using specific immunogen. |
| Applications | WB IHC IF |
| Species Reactivity | Human;Mouse;Rat |
| Specificity | The antibody detects endogenous CKR-5 |
| Immunogen Description | Synthetic peptide from human protein at AA range: 151-200 |
| Target Name | CKR-5 |
| Other Names | C-C chemokine receptor type 5 (C-C CKR-5) (CC-CKR-5) (CCR-5) (CCR5) (CHEMR13) (HIV-1 fusion coreceptor) (CD antigen CD195) |
| Accession No. | Swiss-Prot:P51681NCBI Gene ID:1234 |
| Calculated MW | 40 kDa |
| Concentration | 1 mg/ml |
| Formulation | Liquid in PBS containing 50% glycerol, 0.5% BSA and 0.02% sodium azide. |
| Storage | Store at -20°C |

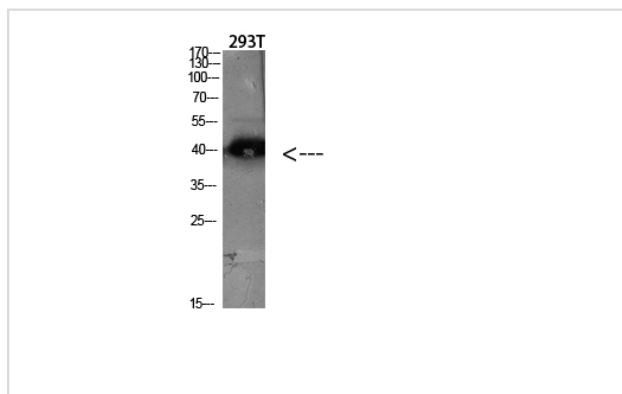
Application Details

Western blotting: 1µg;500-1µg;2000

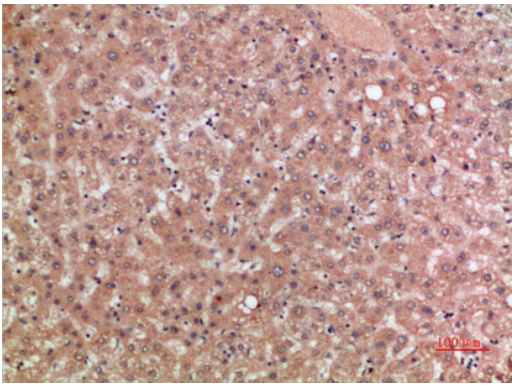
Immunohistochemistry: IHC 1:50-300

IF 1:50-200

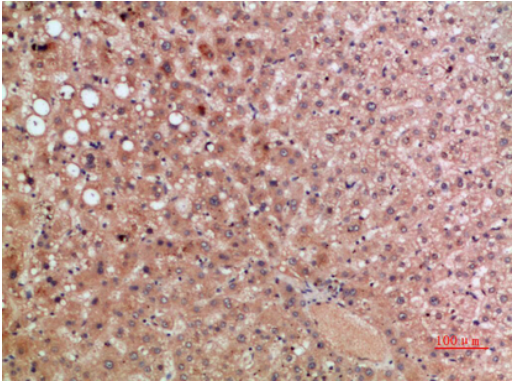
Images



Western blot analysis of Hela lysate, antibody was diluted at 2000. Secondary antibody was diluted at 1:20000



Immunohistochemical analysis of paraffin-embedded human-liver, antibody was diluted at 1:200



Immunohistochemical analysis of paraffin-embedded human-liver, antibody was diluted at 1:200

Note: This product is for in vitro research use only and is not intended for use in humans or animals.