

EME1 Polyclonal Antibody

Catalog No: #31531

Package Size: #31531-1 50ul #31531-2 100ul

Orders: order@signalwayantibody.com

Support: tech@signalwayantibody.com

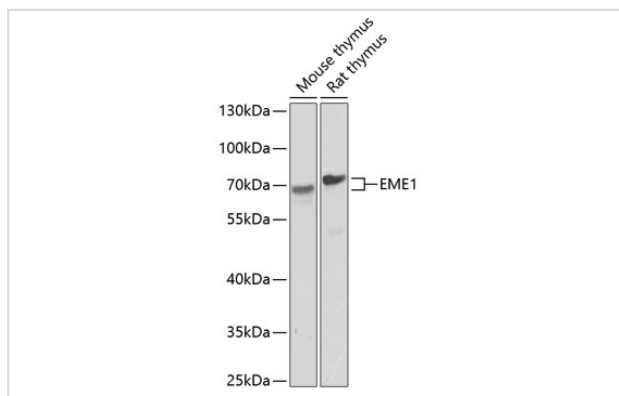
Description

Product Name	EME1 Polyclonal Antibody
Host Species	Rabbit
Clonality	Polyclonal
Isotype	IgG
Purification	Affinity purification
Applications	WB
Species Reactivity	Ms,Rt
Immunogen Description	Recombinant fusion protein of human EME1 (NP_689676.2).
Other Names	EME1; MMS4L; SLX2A; crossover junction endonuclease EME1
Accession No.	Swiss-Prot#:Q96AY2NCBI Gene ID:146956
Calculated MW	63kDa
Formulation	Avoid freeze / thaw cycles. Buffer: PBS with 50% glycerol, pH7.4.
Storage	Store at -20°C

Application Details

WB □ 1:500 - 1:2000

Images



Western blot analysis of extracts of various cell lines, using EME1 antibody.

Background

This gene encodes a protein that complexes with methyl methanesulfonate-sensitive UV-sensitive 81 protein to form an endonuclease complex. The encoded protein interacts with specific DNA structures including nicked Holliday junctions, 3'-flap structures and aberrant replication fork structures. This protein may be involved in repairing DNA damage and in maintaining genomic stability. Alternative splicing results in multiple transcript variants.

Note: This product is for in vitro research use only and is not intended for use in humans or animals.