

## ZNF408 Polyclonal Antibody

Catalog No: #31583

Package Size: #31583-1 50ul #31583-2 100ul

Orders: [order@signalwayantibody.com](mailto:order@signalwayantibody.com)Support: [tech@signalwayantibody.com](mailto:tech@signalwayantibody.com)

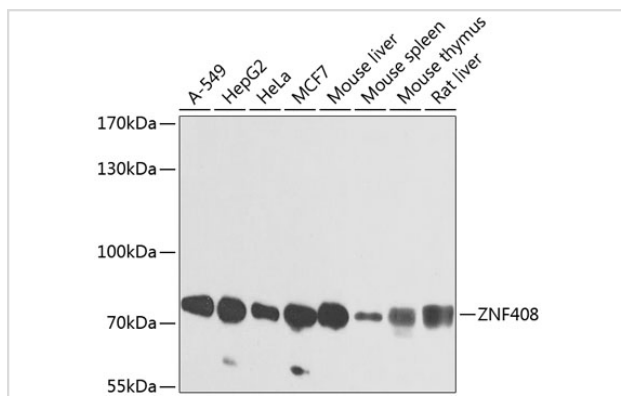
## Description

Product Name	ZNF408 Polyclonal Antibody
Host Species	Rabbit
Clonality	Polyclonal
Isotype	IgG
Purification	Affinity purification
Applications	WB
Species Reactivity	Human,Mouse,Rat
Immunogen Description	Recombinant fusion protein of human ZNF408 (NP_079017.1).
Other Names	ZNF408;EVR6;RP72
Accession No.	Uniprot:Q9H9D4GeneID:79797
Calculated MW	78kDa
SDS-PAGE MW	78kDa
Formulation	PBS with 0.02% sodium azide,50% glycerol,pH7.3.
Storage	Store at -20°C. Avoid freeze / thaw cycles.

## Application Details

WB □ 1:500 - 1:2000

## Images



Western blot analysis of extracts of various cell lines, using ZNF408 antibody.

## Background

The protein encoded by this gene contains ten tandem zinc fingers and an N-terminal SET domain, so it is likely a DNA binding protein that interacts with other proteins. In adults, the encoded protein is expressed most highly in retina. Consequently, defects in this gene have been associated with familial exudative vitreoretinopathy (FEVR) and retinitis pigmentosa (RP).

---

Note: This product is for in vitro research use only and is not intended for use in humans or animals.