

## EXOC1 Polyclonal Antibody

Catalog No: #31635

Package Size: #31635-1 50ul #31635-2 100ul

Orders: order@signalwayantibody.com

Support: tech@signalwayantibody.com

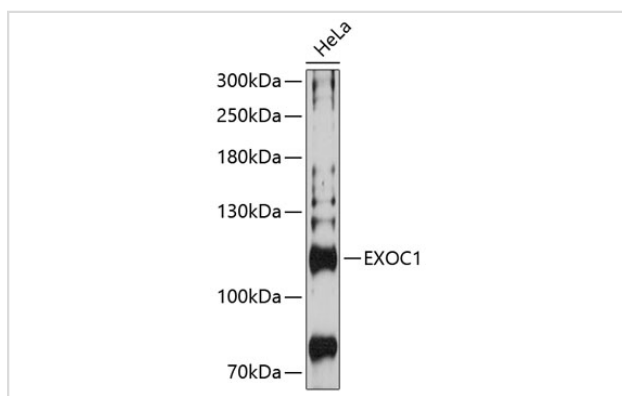
## Description

Product Name	EXOC1 Polyclonal Antibody
Host Species	Rabbit
Clonality	Polyclonal
Isotype	IgG
Purification	Affinity purification
Applications	WB
Species Reactivity	Hu,Ms
Immunogen Description	Recombinant fusion protein of human EXOC1 (NP_001020095.1).
Other Names	EXOC1; BM-102; SEC3; SEC3L1; SEC3P; exocyst complex component 1
Accession No.	Swiss-Prot#:Q9NV70NCBI Gene ID:55763
Calculated MW	102kDa
Formulation	Avoid freeze / thaw cycles.   Buffer: PBS with 50% glycerol, pH7.4.
Storage	Store at -20°C

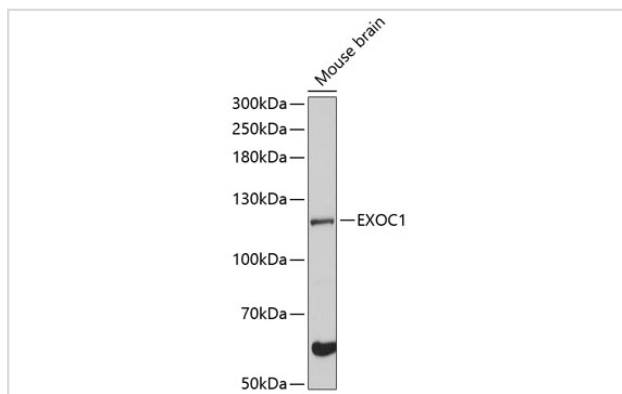
## Application Details

WB □ 1:500 - 1:2000

## Images



Western blot analysis of extracts of HeLa cells, using EXOC1 Antibody.



Western blot analysis of extracts of mouse brain, using EXOC1 Antibody.

## Background

---

The protein encoded by this gene is a component of the exocyst complex, a multiple protein complex essential for targeting exocytic vesicles to specific docking sites on the plasma membrane. Though best characterized in yeast, the component proteins and functions of the exocyst complex have been demonstrated to be highly conserved in higher eukaryotes. At least eight components of the exocyst complex, including this protein, are found to interact with the actin cytoskeletal remodeling and vesicle transport machinery. Alternatively spliced transcript variants encoding distinct isoforms have been described.

---

Note: This product is for in vitro research use only and is not intended for use in humans or animals.