

YWHAH Polyclonal Antibody

Catalog No: #31666



Package Size: #31666-1 50ul #31666-2 100ul

Orders: order@signalwayantibody.com

Support: tech@signalwayantibody.com

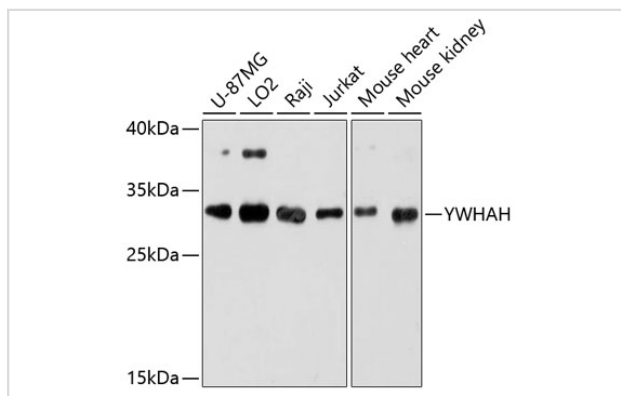
Description

Product Name	YWHAH Polyclonal Antibody
Host Species	Rabbit
Clonality	Polyclonal
Isotype	IgG
Purification	Affinity purification
Applications	WB,IHC,IF
Species Reactivity	Hu,Ms,Rt
Immunogen Description	Recombinant fusion protein of human YWHAH (NP_003396.1).
Other Names	YWHAH; YWHA1; 14-3-3 protein eta
Accession No.	Swiss-Prot#:Q04917NCBI Gene ID:7533
Calculated MW	28kDa
Formulation	Avoid freeze / thaw cycles. Buffer: PBS with 50% glycerol, pH7.4.
Storage	Store at -20°C

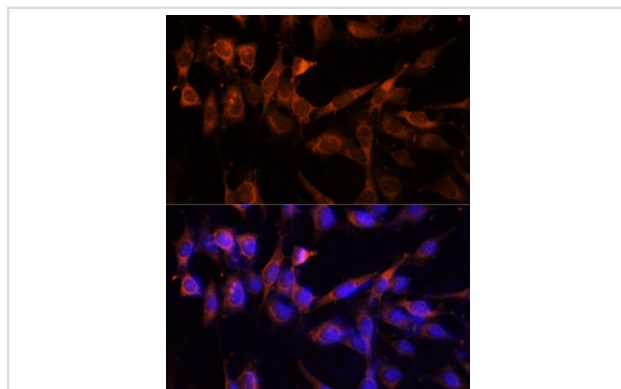
Application Details

WB □ 1:500 - 1:2000 IHC □ 1:50 - 1:100 IF □ 1:50 - 1:100

Images

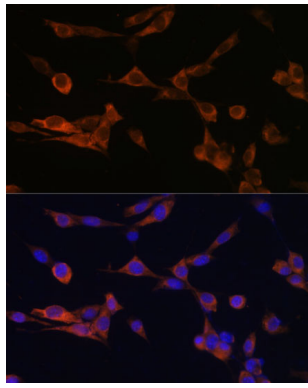


Western blot analysis of extracts of various cell lines, using YWHAH antibody.



Immunofluorescence analysis of NIH-3T3 cells using YWHAH Polyclonal Antibody.

Immunofluorescence analysis of NIH-3T3 cells using YWHAH Polyclonal Antibody.



Background

This gene product belongs to the 14-3-3 family of proteins which mediate signal transduction by binding to phosphoserine-containing proteins. This highly conserved protein family is found in both plants and mammals, and this protein is 99% identical to the mouse, rat and bovine orthologs. This gene contains a 7 bp repeat sequence in its 5' UTR, and changes in the number of this repeat have been associated with early-onset schizophrenia and psychotic bipolar disorder.

Note: This product is for in vitro research use only and is not intended for use in humans or animals.