

## EXOC5 Polyclonal Antibody

Catalog No: #31695

Package Size: #31695-1 50ul #31695-2 100ul

Orders: [order@signalwayantibody.com](mailto:order@signalwayantibody.com)Support: [tech@signalwayantibody.com](mailto:tech@signalwayantibody.com)

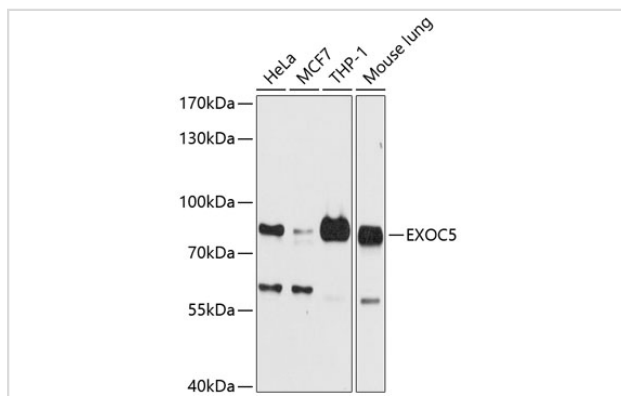
## Description

|                       |   |
|-----------------------|---|
| Product Name          | EXOC5 Polyclonal Antibody   |
| Host Species          | Rabbit  |
| Clonality             | Polyclonal  |
| Isotype               | IgG   |
| Purification          | Affinity purification   |
| Applications          | WB,IHC  |
| Species Reactivity    | Hu,Ms,Rt  |
| Immunogen Description | Recombinant fusion protein of human EXOC5 (NP_006535.1).                    |
| Other Names           | EXOC5; HSEC10; PRO1912; SEC10; SEC10L1; SEC10P; exocyst complex component 5 |
| Accession No.         | Swiss-Prot#:O00471NCBI Gene ID:10640  |
| Calculated MW         | 82kDa   |
| Formulation           | Avoid freeze / thaw cycles.   Buffer: PBS with 50% glycerol, pH7.4.         |
| Storage               | Store at -20°C  |

## Application Details

WB □ 1:1000 - 1:2000 IHC □ 1:50 - 1:200

## Images



Western blot analysis of extracts of various cell lines, using EXOC5 antibody.

## Background

The protein encoded by this gene is a component of the exocyst complex, a multiple protein complex essential for targeting exocytic vesicles to specific docking sites on the plasma membrane. Though best characterized in yeast, the component proteins and functions of exocyst complex have been demonstrated to be highly conserved in higher eukaryotes. At least eight components of the exocyst complex, including this protein, are found to interact with the actin cytoskeletal remodeling and vesicle transport machinery. The complex is also essential for the biogenesis of epithelial cell surface polarity.

---

Note: This product is for in vitro research use only and is not intended for use in humans or animals.