

DEPDC6 Polyclonal Antibody

Catalog No: #31711

Package Size: #31711-1 50ul #31711-2 100ul

Orders: order@signalwayantibody.com

Support: tech@signalwayantibody.com

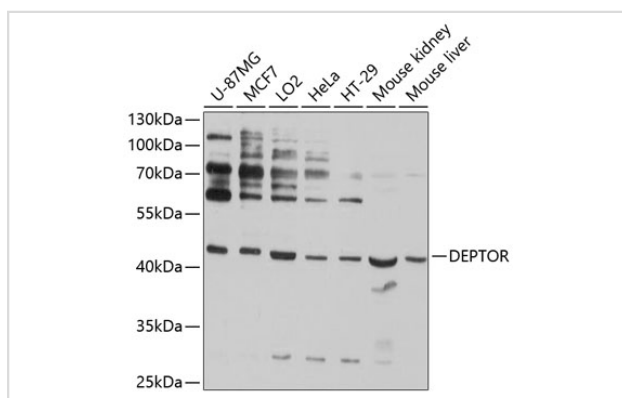
Description

Product Name	DEPDC6 Polyclonal Antibody
Host Species	Rabbit
Clonality	Polyclonal
Isotype	IgG
Purification	Affinity purification
Applications	WB
Species Reactivity	Hu,Ms
Immunogen Description	Recombinant fusion protein of human DEPDC6 (NP_073620.2).
Other Names	DEPTOR; DEP.6; DEPDC6; DEP domain-containing mTOR-interacting protein
Accession No.	Swiss-Prot#:Q8TB45NCBI Gene ID:64798
Calculated MW	46kDa
Formulation	Avoid freeze / thaw cycles. Buffer: PBS with 50% glycerol, pH7.4.
Storage	Store at -20°C

Application Details

WB □ 1:500 - 1:2000

Images



Western blot analysis of extracts of various cell lines, using DEPTOR antibody.

Background

Note: This product is for in vitro research use only and is not intended for use in humans or animals.