

## ERC1 Polyclonal Antibody

Catalog No: #31717

Package Size: #31717-1 50ul #31717-2 100ul

Orders: order@signalwayantibody.com

Support: tech@signalwayantibody.com

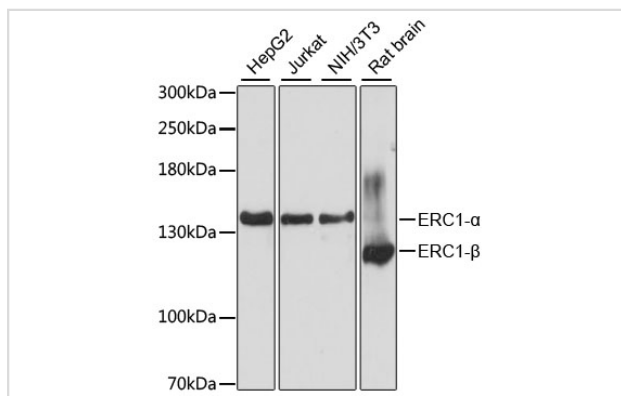
## Description

|                       |   |
|-----------------------|---|
| Product Name          | ERC1 Polyclonal Antibody  |
| Host Species          | Rabbit  |
| Clonality             | Polyclonal  |
| Isotype               | IgG   |
| Purification          | Affinity purification   |
| Applications          | WB  |
| Species Reactivity    | Hu,Ms,Rt  |
| Immunogen Description | Recombinant fusion protein of human ERC1 (NP_829884.1).                       |
| Other Names           | ERC1; Cast2; ELKS; ERC-1; RAB6IP2; ELKS/Rab6-interacting/CAST family member 1 |
| Accession No.         | Swiss-Prot#:Q8IUD2NCBI Gene ID:23085  |
| Calculated MW         | 130 120kDa  |
| Formulation           | Avoid freeze / thaw cycles.   Buffer: PBS with 50% glycerol, pH7.4.           |
| Storage               | Store at -20°C  |

## Application Details

WB □ 1:500 - 1:2000

## Images



Western blot analysis of extracts of various cell lines, using ERC1 antibody.

## Background

The protein encoded by this gene is a member of a family of RIM-binding proteins. RIMs are active zone proteins that regulate neurotransmitter release. This gene has been found fused to the receptor-type tyrosine kinase gene RET by gene rearrangement due to the translocation t(10;12)(q11;p13) in thyroid papillary carcinoma. Alternative splicing results in multiple transcript variants.

---

Note: This product is for in vitro research use only and is not intended for use in humans or animals.