

ZCCHC8 Polyclonal Antibody

Catalog No: #31723

Package Size: #31723-1 50ul #31723-2 100ul

Orders: order@signalwayantibody.comSupport: tech@signalwayantibody.com

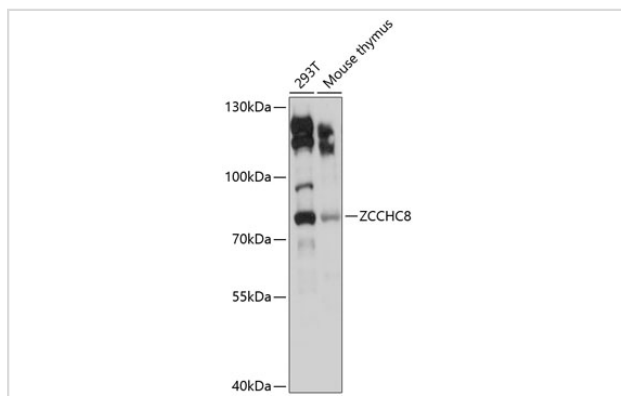
Description

Product Name	ZCCHC8 Polyclonal Antibody
Host Species	Rabbit
Clonality	Polyclonal
Isotype	IgG
Purification	Affinity purification
Applications	WB
Species Reactivity	Hu,Ms
Immunogen Description	Recombinant fusion protein of human ZCCHC8 (NP_060082.2).
Other Names	ZCCHC8; zinc finger CCHC-type containing 8
Accession No.	Swiss-Prot#:Q6NZY4NCBI Gene ID:55596
Calculated MW	78kDa
Formulation	Avoid freeze / thaw cycles. Buffer: PBS with 50% glycerol, pH7.4.
Storage	Store at -20°C

Application Details

WB □ 1:500 - 1:2000

Images



Western blot analysis of extracts of various cell lines, using ZCCHC8 antibody.

Background

This gene encodes a scaffold protein which serves as an accessory factor to the nuclear RNA exosome complex. The encoded protein forms a trimeric human nuclear exosome targeting (NEXT) complex, together with hMTR4 and the RNA-binding factor RBM7 which promotes the exosomal degradation of non-coding promoter-upstream transcripts, enhancer RNAs and 3'-extended products of histone- and small nuclear RNA transcription. This complex is also thought to recruit the exosome to degrade intronic RNAs via its interaction with both the exosome and the spliceosome. It contains both an N-terminal zinc-knuckle domain and a C-terminal proline-rich domain.

Note: This product is for in vitro research use only and is not intended for use in humans or animals.