

## ONECUT1 Polyclonal Antibody

Catalog No: #31729

Package Size: #31729-1 50ul #31729-2 100ul

Orders: [order@signalwayantibody.com](mailto:order@signalwayantibody.com)Support: [tech@signalwayantibody.com](mailto:tech@signalwayantibody.com)

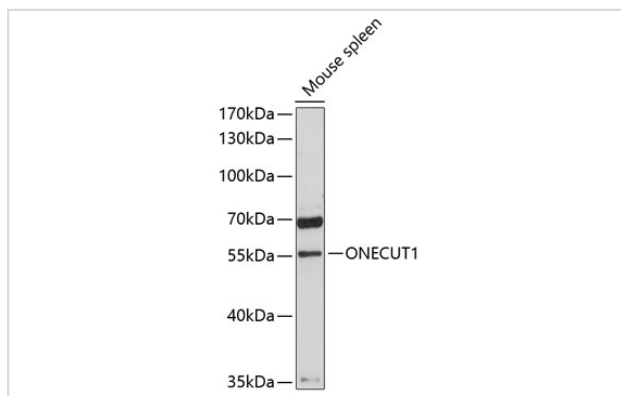
## Description

Product Name	ONECUT1 Polyclonal Antibody
Host Species	Rabbit
Clonality	Polyclonal
Isotype	IgG
Purification	Affinity purification
Applications	WB
Species Reactivity	Hu,Ms
Immunogen Description	Recombinant fusion protein of human ONECUT1 (NP_004489.1).
Other Names	ONECUT1; HNF-6; HNF6; HNF6A; one cut homeobox 1
Accession No.	Swiss-Prot#:Q9UBC0NCBI Gene ID:3175
Calculated MW	55kDa
Formulation	Avoid freeze / thaw cycles.   Buffer: PBS with 50% glycerol, pH7.4.
Storage	Store at -20°C

## Application Details

WB □ 1:200 - 1:2000

## Images



Western blot analysis of extracts of mouse spleen, using ONECUT1 antibody.

## Background

This gene encodes a member of the Cut homeobox family of transcription factors. Expression of the encoded protein is enriched in the liver, where it stimulates transcription of liver-expressed genes, and antagonizes glucocorticoid-stimulated gene transcription. This gene may influence a variety of cellular processes including glucose metabolism, cell cycle regulation, and it may also be associated with cancer. Alternative splicing results in multiple transcript variants.

---

Note: This product is for in vitro research use only and is not intended for use in humans or animals.