

EPS15 Polyclonal Antibody

Catalog No: #31744



Package Size: #31744-1 50ul #31744-2 100ul

Orders: order@signalwayantibody.com

Support: tech@signalwayantibody.com

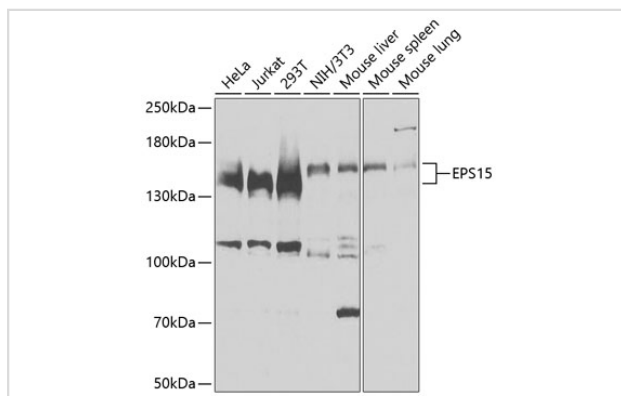
Description

Product Name	EPS15 Polyclonal Antibody
Host Species	Rabbit
Clonality	Polyclonal
Isotype	IgG
Purification	Affinity purification
Applications	WB
Species Reactivity	Hu,Ms
Immunogen Description	Recombinant fusion protein of human EPS15 (NP_001972.1).
Other Names	EPS15; AF-1P; AF1P; MLLT5; epidermal growth factor receptor substrate 15
Accession No.	Swiss-Prot#:P42566NCBI Gene ID:2060
Calculated MW	150kDa
Formulation	Avoid freeze / thaw cycles. Buffer: PBS with 50% glycerol, pH7.4.
Storage	Store at -20°C

Application Details

WB □ 1:500 - 1:2000

Images



Western blot analysis of extracts of various cell lines, using EPS15 antibody.

Background

This gene encodes a protein that is part of the EGFR pathway. The protein is present at clathrin-coated pits and is involved in receptor-mediated endocytosis of EGF. Notably, this gene is rearranged with the HRX/ALL/MLL gene in acute myelogenous leukemias. Alternative splicing results in multiple transcript variants encoding distinct isoforms.

Note: This product is for in vitro research use only and is not intended for use in humans or animals.