

NLRP5 Polyclonal Antibody

Catalog No: #31765

Package Size: #31765-1 50ul #31765-2 100ul

Orders: order@signalwayantibody.com

Support: tech@signalwayantibody.com

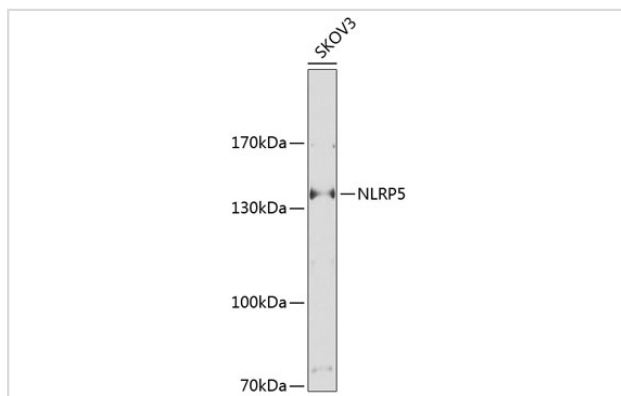
Description

Product Name	NLRP5 Polyclonal Antibody
Host Species	Rabbit
Clonality	Polyclonal
Isotype	IgG
Purification	Affinity purification
Applications	WB
Species Reactivity	Hu,Ms,Rt
Immunogen Description	Recombinant fusion protein of human NLRP5 (NP_703148.4).
Other Names	NLRP5; CLR19.8; MATER; NALP5; PAN11; PYPAF8; NLR family pyrin domain containing 5
Accession No.	Swiss-Prot#:P59047NCBI Gene ID:126206
Calculated MW	134kDa
Formulation	Avoid freeze / thaw cycles. Buffer: PBS with 50% glycerol, pH7.4.
Storage	Store at -20°C

Application Details

WB □ 1:500 - 1:2000

Images



Western blot analysis of extracts of SKOV3 cells, using NLRP5 Antibody.

Background

The protein encoded by this gene belongs to the NALP protein family. Members of the NALP protein family typically contain a NACHT domain, a NACHT-associated domain (NAD), a C-terminal leucine-rich repeat (LRR) region, and an N-terminal pyrin domain (PYD). Expression of this gene is restricted to the oocyte. A mouse gene that encodes a maternal oocyte protein, similar to this encoded protein, is required for normal early embryogenesis.

Note: This product is for in vitro research use only and is not intended for use in humans or animals.