

MAP LC3 $\beta$  Polyclonal Antibody

Catalog No: #46787

Package Size: #46787-1 50ul #46787-2 100ul

Orders: order@signalwayantibody.com

Support: tech@signalwayantibody.com

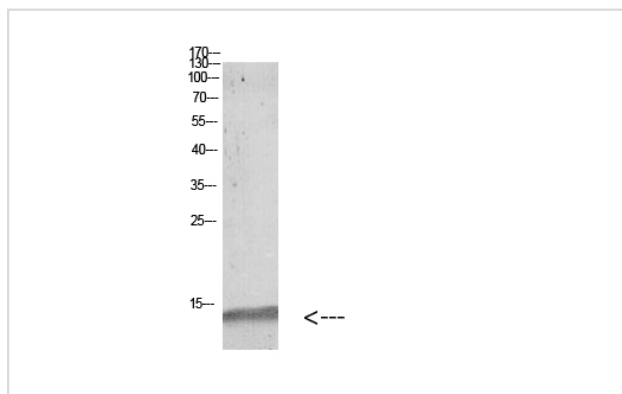
## Description

Product Name	MAP LC3 $\beta$ Polyclonal Antibody
Host Species	Rabbit
Clonality	Polyclonal
Purification	The antibody was affinity-purified from rabbit serum by affinity-chromatography using specific immunogen.
Applications	WB
Species Reactivity	Hu Ms Rt
Specificity	The antibody detects endogenous MAP LC3 $\beta$
Immunogen Type	protein
Immunogen Description	Synthetic peptide from human protein at AA range: 1-50
Target Name	MAP LC3 $\beta$
Other Names	Microtubule-associated proteins 1A/1B light chain 3B (Autophagy-related protein LC3 B) (Autophagy-related ubiquitin-like modifier LC3 B) (MAP1 light chain 3-like protein 2) (MAP1A/MAP1B light chain 3 B) (MAP1A/MAP1B LC3 B) (Microtubule-associated protein 1 light chain 3 beta)
Accession No.	Swiss-Prot:Q9GZQ8NCBI Gene ID:81631
Calculated MW	13 kDa
Concentration	1 mg/ml
Formulation	Liquid in PBS containing 50% glycerol, 0.5% BSA and 0.02% sodium azide.
Storage	Store at -20°C

## Application Details

Western blotting: 1B£B1500-1B£B12000

## Images



Western blot analysis of mouse-kidney mouse-kidney mouse-lung mouse-heart 293T 293T lysate, antibody was diluted at 1000. Secondary antibody was diluted at 1:20000

---

Note: This product is for in vitro research use only and is not intended for use in humans or animals.