

GRO $\alpha$  Polyclonal Antibody

Catalog No: #46801

Package Size: #46801-1 50ul #46801-2 100ul

Orders: [order@signalwayantibody.com](mailto:order@signalwayantibody.com)Support: [tech@signalwayantibody.com](mailto:tech@signalwayantibody.com)

## Description

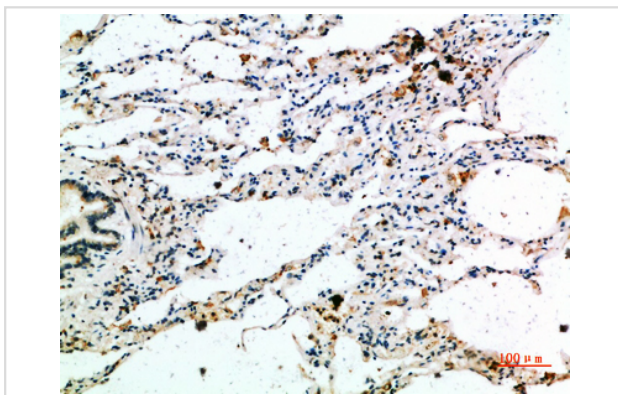
Product Name	GRO $\alpha$ Polyclonal Antibody
Host Species	Rabbit
Clonality	Polyclonal
Purification	The antibody was affinity-purified from rabbit serum by affinity-chromatography using specific immunogen.
Applications	IHC IF
Species Reactivity	Human;Mouse;Rat
Specificity	The antibody detects endogenous GRO $\alpha$
Immunogen Description	Synthetic peptide from human protein at AA range: 70-107
Target Name	GRO $\alpha$
Other Names	Growth-regulated alpha protein (C-X-C motif chemokine 1) (GRO-alpha(1-73)) (Melanoma growth stimulatory activity) (MGSA) (Neutrophil-activating protein 3) (NAP-3) [Cleaved into: GRO-alpha(4-73); GRO-alpha(5-73); GRO-alpha(6-73)]
Accession No.	Swiss-Prot:P09341NCBI Gene ID:2919
Concentration	1 mg/ml
Formulation	Liquid in PBS containing 50% glycerol, 0.5% BSA and 0.02% sodium azide.
Storage	Store at -20°C

## Application Details

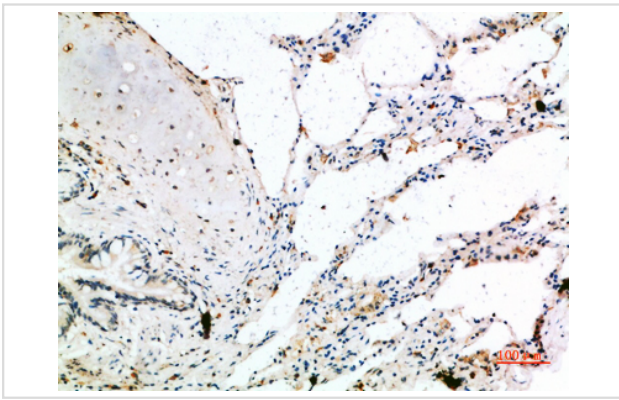
IHC 1:100 - 1:300.

IF 1:50-200

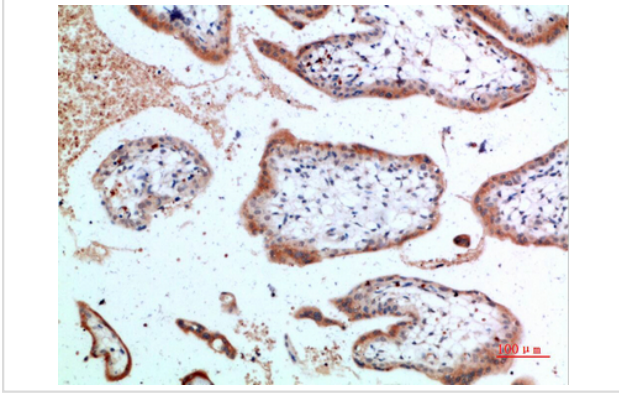
## Images



Immunohistochemical analysis of paraffin-embedded human-lung(), antibody was diluted at 1:200



Immunohistochemical analysis of paraffin-embedded human-lung, antibody was diluted at 1:200



Immunohistochemical analysis of paraffin-embedded human-placenta, antibody was diluted at 1:200

---

Note: This product is for in vitro research use only and is not intended for use in humans or animals.