

## Collagen I Polyclonal Antibody

Catalog No: #46888



Package Size: #46888-1 50ul #46888-2 100ul

Orders: [order@signalwayantibody.com](mailto:order@signalwayantibody.com)Support: [tech@signalwayantibody.com](mailto:tech@signalwayantibody.com)

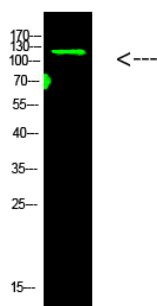
## Description

Product Name	Collagen I Polyclonal Antibody
Host Species	Rabbit
Clonality	Polyclonal
Purification	The antibody was affinity-purified from rabbit antiserum by affinity-chromatography using epitope-specific immunogen.
Applications	WB
Species Reactivity	Hu Ms Rt
Specificity	This antibody detects endogenous levels of Collagen I
Immunogen Type	protein
Immunogen Description	Synthesized peptide derived from human Collagen I. at AA range: 468-542
Target Name	Collagen I
Other Names	Collagen alpha-2(I) chain (Alpha-2 type I collagen)
Accession No.	Swiss-Prot:P08123NCBI Gene ID:1278
Calculated MW	130 kDa
Concentration	1 mg/ml
Formulation	Liquid in PBS containing 50% glycerol, 0.5% BSA and 0.02% sodium azide.
Storage	Store at -20°C

## Application Details

Western blotting: 1B£B'1500-1B£B'12000

## Images



Western Blot analysis of mouse-brain cells using primary antibody diluted at 1:1000(°C overnight). Secondary antibodyB£B'Goat Anti-rabbit IgG IRDye 800( diluted at 1:5000, 25B'£C, 1 hour)

## Published Papers

el at., TGF  $\beta$ 1 mediated Smad signaling pathway and EMT in hepatic fibrosis induced by Nano NiO in vivo and in vitro. In Environ Toxicol on 2020 Apr by Zhang Q, Chang X ,et al..PMID: 31737983, , (2020)

---

Note: This product is for in vitro research use only and is not intended for use in humans or animals.